



Firm Attorney Query

Consumer Documentation

Contents

1. Preface	3
2. Overview	3
3. Messaging Overview	3
4. Messages Exchanged	4
5. Specific Elements - Submitted	4
6. Specific Elements - Returned	4
7. eFS Credentials.....	4
8. Related Documentation.....	5
9. Data Mapping to ECF Messages.....	5
a) FirmAttorneyQueryMessage mapping.....	6
b) FirmAttorneyResponseMessage mapping.....	8
10. Sample Messages.....	10
a) FirmAttorneyQueryMessage.....	10
b) FirmAttorneyResponseMessage	10
Reference Table 1 - Errors.....	12
Document Revision History.....	12

1. Preface

This document provides technical consumer documentation for partners interested in using Integration Service's Firm Attorney Query.

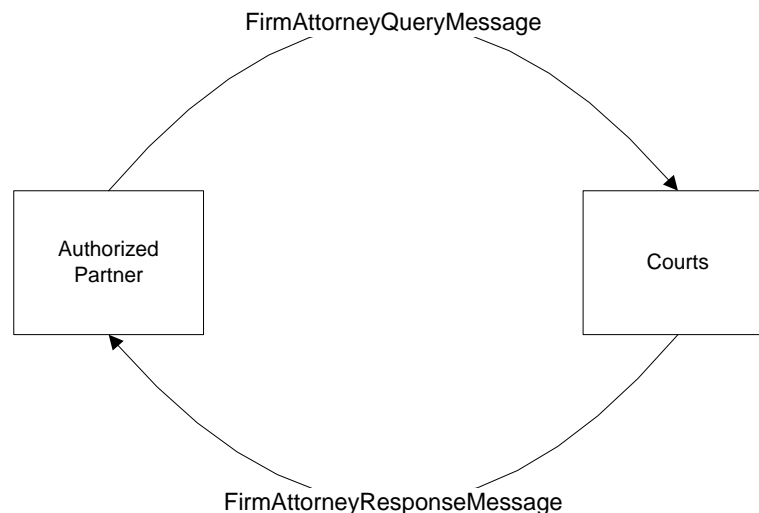
2. Overview

The Firm Attorney Query allows authorized external agencies to lookup the unique Court Record Attorney ID value for each attorney within their eFS firm. For example, prosecutor and public defender offices could use this service in conjunction with the Subsequent Filing service to indicate the Filing Attorney associated with an eFS filing.

The Firm Attorney Query is just one of the Court Integration services. Refer to the Court Integration Services website at <http://www.mncourts.gov/is> for a complete list of available services.

Messages for these services use elements from the Electronic Court Filing (ECF) 4.0 format whenever possible.

3. Messaging Overview



At the point a partner wants to lookup the Court Record Attorney ID for an attorney in their eFS firm, it sends a query message to the Court Record Service.

Messages that make up the Firm Attorney Query service use the SOAP message structure. See the [Integration Services Technical Overview](#) document for more information on the general format for Integration Service messages.

4. Messages Exchanged

FirmAttorneyQueryMessage

Message sent to the courts to query the Court Record Attorney ID values for the attorneys within a partner's eFS firm.

FirmAttorneyResponseMessage

Response to the **FirmAttorneyQueryMessage**. It will provide the requested information, or will alternatively provide details as to what error prevented the query from being successful.

5. Specific Elements - Submitted

QuerySubmitter

1. Required element.
2. Either the **EntityOrganization** or the **EntityPerson** should be submitted.
 - a. Requests initiated by an automated process within the system should include the EntityOrganization.
 - b. Requests initiated by individual system users (e.g., ad hoc requests) should include the EntityPerson.

6. Specific Elements - Returned

EntityPerson

1. Contains information about an eFS attorney
2. Information included
 - a. Court Record Attorney ID
 - i. `../ecf:EntityPerson/nc:PersonOtherIdentification/nc:IdentificationID`
 - ii. Where `../ecf:EntityPerson/nc:PersonOtherIdentification/nc:IdentificationCategoryText` is "Court Record Attorney ID"
 - b. Bar Number
 - i. `../ecf:EntityPerson/nc:PersonStateIdentification/nc:IdentificationID`
 - ii. Where `../ecf:EntityPerson/nc:PersonStateIdentification/nc:IdentificationCategoryText` is "Bar Number"
 - c. Name
 - i. `../ecf:EntityPerson/nc:PersonName/nc:PersonGivenName`
 - ii. `../ecf:EntityPerson/nc:PersonName/nc:PersonMiddleName`
 - iii. `../ecf:EntityPerson/nc:PersonName/nc:PersonSurName`

7. eFS Credentials

In order for Court Integration Services to query information about attorneys from your eFS firm, we need to have the credentials (ie username and password) for an eFS user in the eFS firm. This information will be passed to Integration Services within the SOAP Header of each individual request message. The Minnesota General Rule of Practice 14 indicates that a Registered User of eFS is a person. It would be against these rules to register an eFS account for the filing system, since the filing system is not a person.

The "is" namespace is "http://www.courts.state.mn.us/IS/02/"

eFS Username:

1. Required information.
2. `../soap:Header/is:FilingUser/is:Username`

eFS Password:

1. Required information.
2. Three options are available:
 - a. Plain text
 - i. `../soap:Header/is:FilingUser/is:Password`
 - b. Encrypted
 - i. `../soap:Header/is:FilingUser/is:PasswordCipherText`
 - ii. Messages between the courts and our partners are already encrypted, so the additional encryption is optional and primarily a courtesy to mask passwords from technical staff that may be viewing the messages for troubleshooting purposes.
 - iii. Both the courts and the integration partner would have the ability to decrypt the password
 - iv. Implemented using the Cryptographic Application Programming Interfaces (CAPI) implementation of the Advanced Encryption Standard (AES) algorithm
 - v. Please contact Court Integration Services for more details if you are interested in using this functionality.
 - c. Password Hash
 - i. `../soap:Header/is:FilingUser/is:PasswordHash`
 - ii. Can be obtained through our User Authentication Service.
 - iii. Is unable to be decrypted by the courts or the integration partner.
 - iv. Will be considered valid for approximately a day, after which the User Authentication Service will need to be called again and a new Password Hash obtained.
 1. We recommend having your system acquire a fresh Password Hash for the user the first time they use an eFS Integration each day.

8. Related Documentation

Oasis web site:

<https://www.oasis-open.org/>

Oasis ECF Specification:

<http://docs.oasis-open.org/legalxml-court filing/specs/ecf/v4.01/ecf-v4.01-spec/errata01/os/ecf-v4.01-spec-errata01-os-complete.doc>

Court XML Schema and Simple Types:

<http://mncourts.gov/Integration-Service/CourtXML.aspx>

9. Data Mapping to ECF Messages

Notes:

- Only subsets of elements from the ECF/NIEM message schemas are used by the Firm Attorney Query service. The elements used are represented below.
- Information regarding use is noted.
- Bolded elements in the ECF/NIEM Element column contain values.
- Shaded rows represent 'container' elements used to provide structure and context. Container elements will group other elements and do not contain values themselves.

a) FirmAttorneyQueryMessage mapping

Line Ref Nbr	Depth	ECF/NIEM Element	Description	Include in Message?	Notes
Q0	0	FirmAttorneyQueryMessage	Root element	Always	Partner request for information about the attorneys within their eFS firm.
Q1	1	ecf:SendingMDELocationID	Location to which messages can be sent	Always	
Q2	2	nc:IdentificationID	Callback URL of the sending service	Always	Partner's URL
Q3	1	ecf:SendingMDEProfileCode	ECF service interaction profile	Always	Set to: urn:oasis:names:tc:legalxml-courtfilling:schema:xsd:WebServicesMessaging-2.0
Q4	1	ecf:QuerySubmitter	Entity submitting the request	Always	
Q5	2	ecf:EntityOrganization	Organization submitting request	Optional -Required if EntityPerson is not included.	Use when message is system generated.
Q6	3	nc:OrganizationIdentification		Always	
Q7	4	nc:IdentificationID	Originating Agency Identification Number	Always	Originating Agency's ORI
Q8	4	nc:IdentificationCategoryText		Always	Set to: Originating Agency Identification Number
Q9	3	nc:OrganizationName	Organization Name	Always	Originating agency's full name.
Q10	2	ecf:EntityPerson		Optional -Required if EntityOrganization is not included.	Use when message is generated by an individual system user.
Q11	3	nc:PersonName	Person submitting query	Always	
Q12	4	nc:PersonGivenName	First name		
Q13	4	nc:PersonMiddleName	Middle name		
Q14	4	nc:PersonSurName	Last name		

Firm Attorney Query Documentation

Q15	3	nc:PersonOtherIdentification	Originating-system identification of person requesting query	Always	
Q16	4	nc:IdentificationID		Always	Individual user identification.
Q17	4	nc:IdentificationCategoryText		Always	Set to: Requesting System User Identification
Q18	3	nc:PersonOtherIdentification	Organization of person requesting query	Always	
Q19	4	nc:IdentificationID		Always	Originating Agency's ORI
Q20	4	nc:IdentificationCategoryText		Always	Set to: Originating Agency Identification Number

b) FirmAttorneyResponseMessage mapping

Line Ref Nbr	Depth	ECF/NIEM Element	Description	Include in Message?	Notes
R0	0	FirmAttorneyResponseMessage	Root element	Always	Court response to an FirmAttorneyQueryMessage
R1	1	ecf:SendingMDELocationID	Location to which messages can be sent.	Always	
R2	2	nc:IdentificationID	Callback URL of sending service	Always	Court URL: https://is.courts.state.mn.us/PROD/WebServices/ServiceCatalog/CourtRecordService_4_0.svc
R3	1	ecf:SendingMDEProfileCode	ECF service interaction profile.	Always	Determined by how partner has chosen to receive messages. Messages sent to a web service: urn:oasis:names:tc:legalxml-courtfiling:schema:xsd:WebServicesMessaging-2.0 Messages sent to a MQ Series queue: urn:courts:state:mn:us:MQMessaging-1.0 Messages pulled using a web services client application: urn:courts:state:mn:us:WebServicesRequest-1.0
R4	1	ecf:Error		Always	
R5	2	ecf:ErrorCode	Unique code identifying error.	Always	Defined in Reference Table 1 - Errors
R6	2	ecf:ErrorText	Description of error	Always	Defined in Reference Table 1 - Errors
R7	1	ecf:EntityPerson		Optional	One of these elements will exist for each attorney within the eFS firm
R8	2	nc:PersonName		Always	
R9	3	nc:PersonGivenName	The attorney's first name	Always	
R10	3	nc:PersonMiddleName		Optional	Attorneys will not always have a middle name
R11	3	nc:PersonSurName	The attorney's last name	Always	

Firm Attorney Query Documentation

Line Ref Nbr	Depth	ECF/NIEM Element	Description	Include in Message?	Notes
R12	2	nc:PersonOtherIdentification		Always	
R13	3	nc:IdentificationID	Court Record Attorney ID	Always	
R14	3	nc:IdentificationCategoryText		Always	Will be set to: Court Record Attorney ID
R15	2	nc:PersonStateIdentification		Always	
R16	3	nc:IdentificationID	The attorney's Bar number	Always	
R17	3	nc:IdentificationCategoryText		Always	Will be set to: Bar Number

10. Sample Messages

a) FirmAttorneyQueryMessage

```
<?xml version="1.0" encoding="UTF-8"?>
<FirmAttorneyQueryMessage xmlns="http://www.courts.state.mn.us/FirmAttorneyQueryMessage-4.0"
xsi:schemaLocation="http://www.courts.state.mn.us/FirmAttorneyQueryMessage-4.0 file:///H:/Deve/Schemas/ECF-
4.0/ecf-v4.0-spec/xsd/mn_custom/FirmAttorneyQueryMessage-4.0.xsd" xmlns:xsi="http://www.w3.org/2001/XMLSchema-
instance" xmlns:ecf="urn:oasis:names:tc:legalxml-court filing:schema:xsd:CommonTypes-4.0"
xmlns:nc="http://niem.gov/niem/niem-core/2.0">
  <ecf:SendingMDELocationID>
    <nc:IdentificationID>https://efilingprovider.com:8000</nc:IdentificationID>
  </ecf:SendingMDELocationID>
  <ecf:SendingMDEProfileCode>urn:oasis:names:tc:legalxml-court filing:schema:xsd:WebServicesMessaging-
2.0</ecf:SendingMDEProfileCode>
  <ecf:QuerySubmitter>
    <nc:EntityOrganization>
      <nc:OrganizationIdentification>
        <nc:IdentificationID>MN001013A</nc:IdentificationID>
        <nc:IdentificationCategoryText>Originating Agency Identification
Number</nc:IdentificationCategoryText>
      </nc:OrganizationIdentification>
      <nc:OrganizationName>Aitkin County Attorney</nc:OrganizationName>
    </nc:EntityOrganization>
  </ecf:QuerySubmitter>
</FirmAttorneyQueryMessage>
```

b) FirmAttorneyResponseMessage

```
<?xml version="1.0" encoding="UTF-8"?>
<FirmAttorneyResponseMessage xmlns="http://www.courts.state.mn.us/FirmAttorneyResponseMessage-4.0"
xsi:schemaLocation="http://www.courts.state.mn.us/FirmAttorneyResponseMessage-4.0 file:///H:/Deve/Schemas/ECF-
4.0/ecf-v4.0-spec/xsd/mn_custom/FirmAttorneyResponseMessage-4.0.xsd" xmlns:xsi="http://www.w3.org/2001/XMLSchema-
instance" xmlns:ecf="urn:oasis:names:tc:legalxml-court filing:schema:xsd:CommonTypes-4.0"
xmlns:nc="http://niem.gov/niem/niem-core/2.0">
  <ecf:SendingMDELocationID>
    <nc:IdentificationID>https://efilingprovider.com:8000</nc:IdentificationID>
  </ecf:SendingMDELocationID>
```

```
<ecf:SendingMDEProfileCode>urn:oasis:names:tc:legalxml-courtfiling:schema:xsd:WebServicesMessaging-  
2.0</ecf:SendingMDEProfileCode>  
<ecf:Error>  
  <ecf:ErrorCode>0</ecf:ErrorCode>  
  <ecf:ErrorText>No Error</ecf:ErrorText>  
</ecf:Error>  
<ecf:EntityPerson>  
  <nc:PersonName>  
    <nc:PersonGivenName>Jane</nc:PersonGivenName>  
    <nc:PersonSurName>Smith</nc:PersonSurName>  
  </nc:PersonName>  
  <nc:PersonOtherIdentification>  
    <nc:IdentificationID>92cb5e6e-fdf8-4fa9-9ea9-53802eba50dd</nc:IdentificationID>  
    <nc:IdentificationCategoryText>Court Record Attorney ID</nc:IdentificationCategoryText>  
  </nc:PersonOtherIdentification>  
  <nc:PersonStateIdentification>  
    <nc:IdentificationID>230123</nc:IdentificationID>  
    <nc:IdentificationCategoryText>Bar Number</nc:IdentificationCategoryText>  
  </nc:PersonStateIdentification>  
</ecf:EntityPerson>  
<ecf:EntityPerson>  
  <nc:PersonName>  
    <nc:PersonGivenName>John</nc:PersonGivenName>  
    <nc:PersonMiddleName>Denver</nc:PersonMiddleName>  
    <nc:PersonSurName>Andersen</nc:PersonSurName>  
  </nc:PersonName>  
  <nc:PersonOtherIdentification>  
    <nc:IdentificationID>02p342b9-7f4a-4ce2-8fe4-9517f627e2f1</nc:IdentificationID>  
    <nc:IdentificationCategoryText>Court Record Attorney ID</nc:IdentificationCategoryText>  
  </nc:PersonOtherIdentification>  
  <nc:PersonStateIdentification>  
    <nc:IdentificationID>565333</nc:IdentificationID>  
    <nc:IdentificationCategoryText>Bar Number</nc:IdentificationCategoryText>  
  </nc:PersonStateIdentification>  
</ecf:EntityPerson>  
</FirmAttorneyResponseMessage>
```

Reference Table 1 - Errors

Errors

ErrorCode	ErrorText	Additional Notes
0	No Error	
13	Service currently unavailable	
34	Technical Error: ...	
48	eFS Credentials Missing	
49	Unknown eFS User	
50	Inactive eFS User	
64	Unmapped error from eFS: ...	
66	Invalid eFS Password Hash	
79	eFS Account Locked. Please reset password through eFS website.	

Soap Errors

ErrorCode	ErrorText	Additional Notes
Invalid Security Token	An invalid security token was provided	Refers to the Integration Services account, not the eFS account
Unauthorized Access	Consumer does not have rights to service	
Invalid Message	The <invalid element> is invalid because <error>.	Schema validation errors.
Version Mismatch	An invalid message version was provided	

Document Revision History

Date	Author	Description
2018-08-08	E. Sczygelski	Initial draft
2018-10-05	E. Sczygelski	Defined that the "is" namespace is http://www.courts.state.mn.us/IS/02/ . Used for submitting eFS credentials.
2019-04-29	E. Sczygelski	Updated to indicate that eFS credentials need to belong to persons
2019-11-05	E. Sczygelski	<ul style="list-style-type: none"> Updated to include eFS Password Hash as an option. Renumbering errors to have number align between eFS Integration Services.
2020-01-17	E. Sczygelski	Added error code 79
2020-02-19	E. Sczygelski	Documentation published – service is now out of pilot and part of the general service catalog.

