



## Firm Service Contact Query

### Consumer Documentation

## Contents

1. Preface .....	3
2. Overview .....	3
3. Messaging Overview .....	3
4. Messages Exchanged .....	4
5. Specific Elements - Submitted .....	4
6. Specific Elements - Returned .....	4
7. eFS Credentials.....	4
8. Related Documentation .....	5
9. Data Mapping to ECF Messages.....	5
a) FirmServiceContactQueryMessage mapping.....	6
b) FirmServiceContactResponseMessage mapping .....	8
10. Sample Messages.....	10
a) FirmServiceContactQueryMessage.....	10
b) FirmServiceContactResponseMessage .....	10
Reference Table 1 - Errors.....	13
Document Revision History.....	13

### 1. Preface

This document provides technical consumer documentation for partners interested in using Integration Service's Firm Service Contact Query.

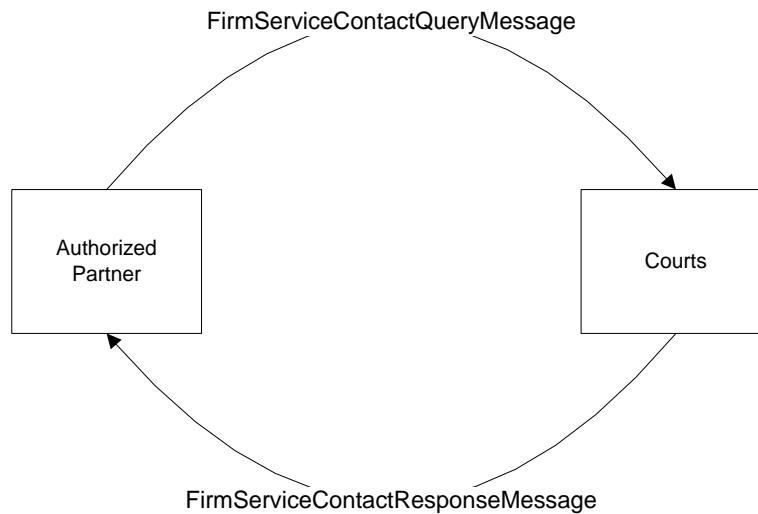
### 2. Overview

The Firm Service Contact Query allows authorized external agencies to lookup the unique Court Record Service Contact ID value for each service contact within their eFS firm. For example, prosecutor and public defender offices could use this service in conjunction with the Attach Service Contact service to assign a service contact in eFS for the plaintiff or defendant on a specific case.

The Firm Service Contact Query is just one of the Court Integration services. Refer to the Court Integration Services website at <http://www.mncourts.gov/is> for a complete list of available services.

Messages for these services use elements from the Electronic Court Filing (ECF) 4.0 format whenever possible.

### 3. Messaging Overview



At the point a partner wants to lookup the Court Record Service Contact ID for a service contact in their eFS firm, it sends a query message to the Court Record Service.

Messages that make up the Firm Service Contact Query service use the SOAP message structure. See the [Integration Services Technical Overview](#) document for more information on the general format for Integration Service messages.

### 4. Messages Exchanged

#### **FirmServiceContactQueryMessage**

Message sent to the courts to query the Court Record Service Contact ID values for the service contacts within a partner's eFS firm.

#### **FirmServiceContactResponseMessage**

Response to the **FirmServiceContactQueryMessage**. It will provide the requested information, or will alternatively provide details as to what error prevented the query from being successful.

### 5. Specific Elements - Submitted

#### **QuerySubmitter**

1. Required element.
2. Either the **EntityOrganization** or the **EntityPerson** should be submitted.
  - a. Requests initiated by an automated process within the system should include the EntityOrganization.
  - b. Requests initiated by individual system users (e.g., ad hoc requests) should include the EntityPerson.

### 6. Specific Elements - Returned

#### **EntityPerson/PersonAugmentation**

1. Contains information about an eFS service contact
2. Information included
  - a. Court Record Service Contact ID
    - i. `../ecf:EntityPerson/ecf:PersonAugmentation/ecf:ElectronicServiceInformation/ecf:ServiceRecipientID/nc:IdentificationID`
  - b. Email
    - i. `../ecf:EntityPerson/ecf:PersonAugmentation/nc:ContactInformation/nc:ContactEmailID`
  - c. Name
    - i. `../ecf:EntityPerson/ecf:PersonAugmentation/nc:ContactInformation/nc:ContactMailingAddress/nc:StructuredAddress/nc:AddressRecipientName`

### 7. eFS Credentials

In order for Court Integration Services to query information about service contacts from your eFS firm, we need to have the credentials (ie username and password) for an eFS user in the eFS firm. This information will be passed to Integration Services within the SOAP Header of each individual request message. The Minnesota General Rule of Practice 14 indicates that a Registered User of eFS is a person. It would be against these rules to register an eFS account for the filing system, since the filing system is not a person.

The "is" namespace is "http://www.courts.state.mn.us/IS/02/"

#### **eFS Username:**

1. Required information.
2. `../soap:Header/is:FilingUser/is:Username`

### eFS Password:

1. Required information.
2. Three options are available:
  - a. Plain text
    - i. ../soap:Header/is:FilingUser/is:Password
  - b. Encrypted
    - i. ../soap:Header/is:FilingUser/is:PasswordCipherText
    - ii. Messages between the courts and our partners are already encrypted, so the additional encryption is optional and primarily a courtesy to mask passwords from technical staff that may be viewing the messages for troubleshooting purposes.
    - iii. Both the courts and the integration partner would have the ability to decrypt the password
    - iv. Implemented using the Cryptographic Application Programming Interfaces (CAPI) implementation of the Advanced Encryption Standard (AES) algorithm
    - v. Please contact Court Integration Services for more details if you are interested in using this functionality.
  - c. Password Hash
    - i. ../soap:Header/is:FilingUser/is:PasswordHash
    - ii. Can be obtained through our User Authentication Service.
    - iii. Is unable to be decrypted by the courts or the integration partner.
    - iv. Will be considered valid for approximately a day, after which the User Authentication Service will need to be called again and a new Password Hash obtained.
      1. We recommend having your system acquire a fresh Password Hash for the user the first time they use an eFS Integration each day.

## 8. Related Documentation

Oasis web site:

<https://www.oasis-open.org/>

Oasis ECF Specification:

<http://docs.oasis-open.org/legalxml-court filing/specs/ecf/v4.01/ecf-v4.01-spec/errata01/os/ecf-v4.01-spec-errata01-os-complete.doc>

Court XML Schema and Simple Types:

<http://mncourts.gov/Integration-Service/CourtXML.aspx>

## 9. Data Mapping to ECF Messages

### Notes:

- Only subsets of elements from the ECF/NIEM message schemas are used by the Firm Service Contact Query service. The elements used are represented below.
- Information regarding use is noted.
- Bolded elements in the ECF/NIEM Element column contain values.
- Shaded rows represent 'container' elements used to provide structure and context. Container elements will group other elements and do not contain values themselves.

## Firm Service Contact Query Documentation

### a) FirmServiceContactQueryMessage mapping

Line Ref Nbr	Depth	ECF/NIEM Element	Description	Include in Message?	Notes
Q0	0	FirmServiceContactQueryMessage	Root element	Always	Partner request for information about the service contacts within their eFS firm.
Q1	1	ecf:SendingMDELocationID	Location to which messages can be sent	Always	
Q2	2	<b>nc:IdentificationID</b>	Callback URL of the sending service	Always	Partner's URL
Q3	1	<b>ecf:SendingMDEProfileCode</b>	ECF service interaction profile	Always	Set to:  urn:oasis:names:tc:legalxml-courtfiling:schema:xsd:WebServicesMessaging-2.0
Q4	1	ecf:QuerySubmitter	Entity submitting the request	Always	
Q5	2	ecf:EntityOrganization	Organization submitting request	<b>Optional</b> -Required if EntityPerson is not included.	<b>Use when message is system generated.</b>
Q6	3	nc:OrganizationIdentification		Always	
Q7	4	<b>nc:IdentificationID</b>	Originating Agency Identification Number	Always	Originating Agency's ORI
Q8	4	<b>nc:IdentificationCategoryText</b>		Always	Set to: Originating Agency Identification Number
Q9	3	<b>nc:OrganizationName</b>	Organization Name	Always	Originating agency's full name.
Q10	2	ecf:EntityPerson		<b>Optional</b> -Required if EntityOrganization is not included.	<b>Use when message is generated by an individual system user.</b>
Q11	3	nc:PersonName	Person submitting query	Always	
Q12	4	<b>nc:PersonGivenName</b>	First name		
Q13	4	<b>nc:PersonMiddleName</b>	Middle name		
Q14	4	<b>nc:PersonSurName</b>	Last name		

## Firm Service Contact Query Documentation

Q15	3	nc:PersonOtherIdentification	Originating-system identification of person requesting query	Always	
Q16	4	<b>nc:IdentificationID</b>		Always	Individual user identification.
Q17	4	<b>nc:IdentificationCategoryText</b>		Always	Set to: Requesting System User Identification
Q18	3	nc:PersonOtherIdentification	Organization of person requesting query	Always	
Q19	4	<b>nc:IdentificationID</b>		Always	Originating Agency's ORI
Q20	4	<b>nc:IdentificationCategoryText</b>		Always	Set to: Originating Agency Identification Number

## Firm Service Contact Query Documentation

### b) FirmServiceContactResponseMessage mapping

Line Ref Nbr	Depth	ECF/NIEM Element	Description	Include in Message?	Notes
R0	0	FirmServiceContactResponseMessage	Root element	Always	Court response to an FirmServiceContactQueryMessage
R1	1	ecf:SendingMDELocationID	Location to which messages can be sent.	Always	
R2	2	<b>nc:IdentificationID</b>	Callback URL of sending service	Always	Court URL: <a href="https://is.courts.state.mn.us/PROD/WebServices/ServiceCatalog/CourtRecordService_4_0.svc">https://is.courts.state.mn.us/PROD/WebServices/ServiceCatalog/CourtRecordService_4_0.svc</a>
R3	1	<b>ecf:SendingMDEProfileCode</b>	ECF service interaction profile.	Always	Determined by how partner has chosen to receive messages.  Messages sent to a web service: <b>urn:oasis:names:tc:legalxml-courtfiling:schema:xsd:WebServicesMessaging-2.0</b>  Messages sent to a MQ Series queue: <b>urn:courts:state:mn:us:MQMessaging-1.0</b>  Messages pulled using a web services client application: <b>urn:courts:state:mn:us:WebServicesRequest-1.0</b>
R4	1	ecf:Error		Always	
R5	2	<b>ecf:ErrorCode</b>	Unique code identifying error.	Always	Defined in <a href="#">Reference Table 1 - Errors</a>
R6	2	<b>ecf:ErrorText</b>	Description of error	Always	Defined in <a href="#">Reference Table 1 - Errors</a>
R7	1	ecf:EntityPerson		Optional	One of these elements will exist for each Service Contact within the eFS firm
R8	2	ecf:PersonAugmentation		Always	Information within the PersonAugmentation element belongs to the Service Contact
R9	3	ecf:ElectronicServiceInformation		Always	



## Firm Service Contact Query Documentation

Line Ref Nbr	Depth	ECF/NIEM Element	Description	Include in Message?	Notes
R10	4	ecf:ServiceRecipientID		Always	
R11	5	<b>nc:IdentificationID</b>	Court Record Service Contact ID	Always	
R12	5	<b>nc:IdentificationCategoryText</b>		Always	Will be set to: Court Record Service Contact ID
R13	3	nc:ContactInformation		Always	
R14	4	<b>nc:ContactEmailID</b>	Service contact's email address	Always	
R15	4	nc:ContactMailingAddress		Always	
R16	5	nc:StructuredAddress		Always	
R17	6	<b>nc:AddressRecipientName</b>	Service contact's name	Always	First Middle Last

### 10. Sample Messages

#### a) FirmServiceContactQueryMessage

```
<?xml version="1.0" encoding="UTF-8"?>
<FirmServiceContactQueryMessage xmlns="http://www.courts.state.mn.us/FirmServiceContactQueryMessage-4.0"
xsi:schemaLocation="http://www.courts.state.mn.us/FirmServiceContactQueryMessage-4.0 file:///H:/Deve/Schemas/ECF-
4.0/ecf-v4.0-spec/xsd/mn_custom/FirmServiceContactQueryMessage-4.0.xsd"
xmlns:xsi="http://www.w3.org/2001/XMLSchema-instance" xmlns:ecf="urn:oasis:names:tc:legalxml-
courtfiling:schema:xsd:CommonTypes-4.0" xmlns:nc="http://niem.gov/niem/niem-core/2.0">
  <ecf:SendingMDELocationID>
    <nc:IdentificationID>https://efilingprovider.com:8000</nc:IdentificationID>
  </ecf:SendingMDELocationID>
  <ecf:SendingMDEProfileCode>urn:oasis:names:tc:legalxml-courtfiling:schema:xsd:WebServicesMessaging-
2.0</ecf:SendingMDEProfileCode>
  <ecf:QuerySubmitter>
    <nc:EntityOrganization>
      <nc:OrganizationIdentification>
        <nc:IdentificationID>MN001013A</nc:IdentificationID>
        <nc:IdentificationCategoryText>Originating Agency Identification
Number</nc:IdentificationCategoryText>
      </nc:OrganizationIdentification>
      <nc:OrganizationName>Aitkin County Attorney</nc:OrganizationName>
    </nc:EntityOrganization>
  </ecf:QuerySubmitter>
</FirmServiceContactQueryMessage>
```

#### b) FirmServiceContactResponseMessage

```
<?xml version="1.0" encoding="UTF-8"?>
<FirmServiceContactResponseMessage xmlns="http://www.courts.state.mn.us/FirmServiceContactResponseMessage-4.0"
xsi:schemaLocation="http://www.courts.state.mn.us/FirmServiceContactResponseMessage-4.0
file:///H:/Deve/Schemas/ECF-4.0/ecf-v4.0-spec/xsd/mn_custom/FirmServiceContactResponseMessage-4.0.xsd"
xmlns:xsi="http://www.w3.org/2001/XMLSchema-instance" xmlns:ecf="urn:oasis:names:tc:legalxml-
courtfiling:schema:xsd:CommonTypes-4.0" xmlns:nc="http://niem.gov/niem/niem-core/2.0">
  <ecf:SendingMDELocationID>
    <nc:IdentificationID>https://efilingprovider.com:8000</nc:IdentificationID>
  </ecf:SendingMDELocationID>
```



```

<ecf:SendingMDEProfileCode>urn:oasis:names:tc:legalxml-courtfiling:schema:xsd:WebServicesMessaging-
2.0</ecf:SendingMDEProfileCode>
  <ecf:Error>
    <ecf:ErrorCode>0</ecf:ErrorCode>
    <ecf:ErrorText>No Error</ecf:ErrorText>
  </ecf:Error>
  <ecf:EntityPerson>
    <ecf:PersonAugmentation>
      <ecf:ElectronicServiceInformation>
        <ecf:ServiceRecipientID>
          <nc:IdentificationID>894ddfff-b9bf-44cc-828f-52bb2bb4ae9e</nc:IdentificationID>
          <nc:IdentificationCategoryText>Court Record Service Contact
ID</nc:IdentificationCategoryText>
        </ecf:ServiceRecipientID>
        <ecf:ReceivingMDELocationID/>
        <ecf:ReceivingMDEProfileCode/>
      </ecf:ElectronicServiceInformation>
      <nc:ContactInformation>
        <nc:ContactEmailID>ServiceContactOne@courts.state.mn.us</nc:ContactEmailID>
        <nc:ContactMailingAddress>
          <nc:StructuredAddress>
            <nc:AddressRecipientName>Franklin Delano Roosevelt</nc:AddressRecipientName>
          </nc:StructuredAddress>
        </nc:ContactMailingAddress>
      </nc:ContactInformation>
    </ecf:PersonAugmentation>
  </ecf:EntityPerson>
  <ecf:EntityPerson>
    <ecf:PersonAugmentation>
      <ecf:ElectronicServiceInformation>
        <ecf:ServiceRecipientID>
          <nc:IdentificationID>cc80b903-e3e5-4213-bdb4-f0e86ea81878</nc:IdentificationID>
          <nc:IdentificationCategoryText>Court Record Service Contact
ID</nc:IdentificationCategoryText>
        </ecf:ServiceRecipientID>
        <ecf:ReceivingMDELocationID/>
        <ecf:ReceivingMDEProfileCode/>
      </ecf:ElectronicServiceInformation>
      <nc:ContactInformation>
        <nc:ContactEmailID>Best.Email.Ever@courts.state.mn.us</nc:ContactEmailID>
        <nc:ContactMailingAddress>

```



## Firm Service Contact Query Documentation

---

```
<nc:StructuredAddress>  
  <nc:AddressRecipientName>George NoMiddleName</nc:AddressRecipientName>  
</nc:StructuredAddress>  
</nc:ContactMailingAddress>  
</nc:ContactInformation>  
</ecf:PersonAugmentation>  
</ecf:EntityPerson>  
</FirmServiceContactResponseMessage>
```

### Reference Table 1 - Errors

#### Errors

ErrorCode	ErrorText	Additional Notes
0	No Error	
13	Service currently unavailable	
34	Technical Error: ...	
48	eFS Credentials Missing	
49	Unknown eFS User	
50	Inactive eFS User	
64	Unmapped error from eFS: ...	
66	Invalid eFS Password Hash	
79	eFS Account Locked. Please reset password through eFS website.	

#### Soap Errors

ErrorCode	ErrorText	Additional Notes
Invalid Security Token	An invalid security token was provided	Refers to the Integration Services account, not the eFS account
Unauthorized Access	Consumer does not have rights to service	
Invalid Message	The <invalid element> is invalid because <error>.	Schema validation errors.
Version Mismatch	An invalid message version was provided	

### Document Revision History

Date	Author	Description
2018-03-05	E. Sczygelski	Initial draft
2018-10-05	E. Sczygelski	Defined the "is" namespace is <a href="http://www.courts.state.mn.us/IS/02/">http://www.courts.state.mn.us/IS/02/</a> . Used for submitting eFS credentials
2019-04-29	E. Sczygelski	Revised to indicate that eFS accounts must belong to a person, according to Minnesota General Rule of Practice 14
2019-10-24	E. Sczygelski	Renumbering errors to have numbers align between eFS Integration Services
2019-11-04	E. Sczygelski	Added Password Hash option
2020-01-17	E. Sczygelski	Added error code 79
2020-02-19	E. Sczygelski	Documentation published – service is now out of pilot and part of the general service catalog.