



**MINNESOTA
JUDICIAL BRANCH**

Court Integration Services

Outbound Document Notifications

Technical Consumer Documentation

Copyright © 2017 by the State of Minnesota
State Court Administrator's Office
All Rights Reserved

TABLE OF CONTENTS

1. PREFACE	3
2. OVERVIEW	3
3. RELATED DOCUMENTATION	3
4. MESSAGING OVERVIEW	4
5. MESSAGE EXCHANGES	4
6. DATA MAPPING TO ECF MESSAGES.....	5
7. ECF COREFILINGMESSAGE DEFINITION	6
8. DATA MAPPING TO ECF MESSAGERECEIPTMESSAGE.....	10
9. DOCUMENT NOTIFICATION MESSAGE TYPES.....	12
10. USAGE.....	12
11. DOCUMENT REVISION HISTORY.....	13

1. Preface

This document provides technical consumer documentation for partners authorized to receive document images from Minnesota courts.

2. Overview

Partners may enhance their systems to electronically receive document images to their system directly from the Minnesota court case management system, MNCIS. These documents are transmitted using the core filing message format specified in the Electronic Court Filing 4.0 specification.

Documents are PDFs and in most instances will be searchable. However there may be instances where partners receive a non-searchable PDF.

Document notifications are designed based on categories of documents (e.g., Arrest Warrants). Partners will select the document categories they wish to receive.

Messages can be sent to a web service developed by the partner that can be accessed by the Minnesota Court OR messages can be retrieved by the partner using a web service provided by the Minnesota Court.

3. Related Documentation

Oasis web site:

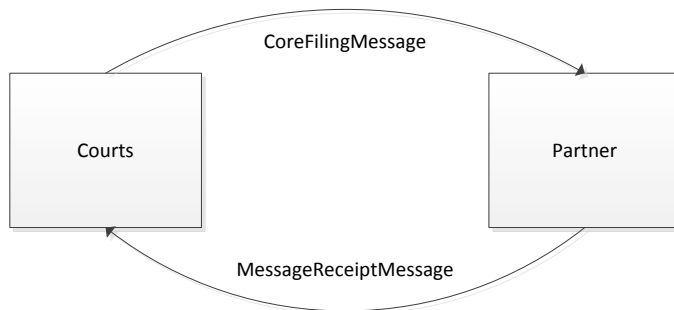
<https://www.oasis-open.org/>

Oasis ECF Specification

<http://docs.oasis-open.org/legalxml-court filing/specs/ecf/v4.0/ecf-v4.0-spec/ecf-v4.0-spec.pdf>

4. Messaging Overview

Part 1



Courts will transmit the `CoreFilingMessage` to the partner and will receive, in response, a `MessageReceiptMessage`, which will notify the courts that the document has been successfully received.

5. Message Exchanges

`CoreFilingMessage`

This is the message sent to the partner in the document notification process. This message will contain the document(s) being sent.

`MessageReceiptMessage` (response to `CoreFilingMessage`)

This is the response to the `CoreFilingMessage`. This message will indicate the partner has received the `CoreFilingMessage` (when the message was sent to a web service).

6. Data Mapping to ECF Messages

Data Mapping Notes:

- Only subsets of elements from the ECF Message schemas are used for a document notification from Minnesota courts. Those elements, with the corresponding ECF schema identifier, are represented below.
- **Bolded** elements in the ECF Element column contain values.
- Shaded rows represent a 'container' element that provides structure and context. These elements will not contain a value, but provide context and structure to the message. In the below example, the element named <ncPersonName> is a grouping element and will not hold data. The child elements will hold the actual values.

```
<nc:PersonName>  
  <nc:PersonGivenName>Jane</PersonGivenName>  
  <nc:PersonMiddleName>Jo</PersonMiddleName>  
  <nc:PersonSurName>Williams</PersonSurName>  
</PersonName>
```

7. ECF CoreFilingMessage definition

Line Ref Nbr	ECF/NIEM Element	Description	Included In Message?	Notes
1	CoreFilingMessage	Root element	Always	
	nc:DocumentDescriptionText	Category of document notification.	Always	Describes the general content of the document (e.g., Outbound Warrant Documents)
	nc:DocumentSubmitter		Always	
	Nc:EntityOrganization		Always	
	Nc:OrganizationIdentification		Always	
	Nc:IdentificationID	Court Originating Agency Identifier (ORI)	Always	ORI for Court where the case is located.
	Nc:IdentificationCategoryText		Always	Originating Agency Identification Number
	Nc:OrganizationName	Full name of originating agency	Always	Description of Court where the case is located.
	ecf: SendingMDELocationID		Always	
	nc:IdentificationID	Callback URL of the sending service	Always	https://is.courts.state.mn.us/PROD/WebServices/ServiceCatalog/DocumentNotificationService_4_0.svc
	Ecf:SendingMDEProfileCode	ECF service interaction profile.	Always	<p>Determined by how partner has chosen to receive messages.</p> <p>Messages sent to a web service: urn:oasis:names:tc:legalxml-courtfiling:schema:xsd:WebServicesMessaging-2.0</p> <p>Messages sent to a MQ Series queue: urn:courts:state:mn:us:MQMessaging-1.0</p> <p>Messages pulled using a web services client application: urn:courts:state:mn:us:WebServicesRequest-1.0</p>

Line Ref Nbr	ECF/NIEM Element	Description	Included In Message?	Notes
	nc: Case		Always	
	nc:CaseTrackingID		Always	Court Case Number
	FilingLeadDocument		Always	Created for each document being published.
	nc:DocumentDescriptionText	Name of the document.	Optional	Document name. May be the same as the j:RegisterActionDescriptionText
	nc:DocumentFiledDate			
	DateTime			Date and time document was linked to the court case event.
	nc:DocumentIdentification			
	nc:IdentificationID	Unique identifier for the court case event to which the document is related.	Always	ID for the court case event
	nc:IdentificationCategory			Court Case Event ID
	nc:DocumentSequenceID	This is the order for the document, zero based	Always	Set to 0 for the first lead document, and then incremented by 1 for each subsequent document.
	ecf:DocumentMetadata		Always	
	j:RegisterActionDescriptionText	Description of the case event to which the document is attached.	Always	Description of case event to which document is attached. Corresponds to FilingLeadDocument\ nc:DocumentIdentification\ nc:IdentificationID
	ecf:FilingAttorneyID		Always	Required element in the ECF structure. An empty element is included.
	ecf:FilingPartyID		Always	Required element in the ECF structure. An empty element is included.

Line Ref Nbr	ECF/NIEM Element	Description	Included In Message?	Notes
	ecf:SpecialHandlingInstructions			Indicates when document is confidential: Confidential Document. Not included for public documents.
	ecf:DocumentRendition		Always	
	nc:DocumentFileControlID			Court Document Version ID
	ecf:DocumentRenditionMetadata		Always	
	ecf:DocumentAttachment		Always	
	nc:BinaryBase64Object	This is the binary base 64 encoded document	Always	
	nc:BinaryFormatStandardName	This is the file type format (file extension)	Always	application/pdf
	ecf:AttachmentSequenceID	This is the order for the attachment, zero based	Always	Set to: 0

Sample

```
<n1:CoreFilingMessage xmlns="urn:oasis:names:tc:legalxml-courtfiling:schema:xsd:CoreFilingMessage-4.0" xmlns:ansi-nist="http://niem.gov/niem/ansi-nist/2.0" xmlns:civ="urn:oasis:names:tc:legalxml-courtfiling:schema:xsd:CivilCase-4.0" xmlns:crc="urn:oasis:names:tc:legalxml-courtfiling:schema:xsd:CriminalCase-4.0" xmlns:doc="urn:oasis:names:tc:legalxml-courtfiling:schema:xsd:DomesticCase-4.0" xmlns:ecf="urn:oasis:names:tc:legalxml-courtfiling:schema:xsd:CommonTypes-4.0" xmlns:j="http://niem.gov/niem/domains/jxdm/4.0" xmlns:nc="http://niem.gov/niem/niem-core/2.0" xmlns:s="http://niem.gov/niem/structures/2.0" xmlns:scr="http://niem.gov/niem/domains/screening/2.0" xmlns:xsi="http://www.w3.org/2001/XMLSchema-instance" xsi:schemaLocation="urn:oasis:names:tc:legalxml-courtfiling:schema:xsd:CoreFilingMessage-4.0 file:///H:/Deve/Schemas/ECF-4.0/ecf-v4.0-spec/xsd/message/ECF-4.0-CoreFilingMessage.xsd">
```

```
  <DocumentDescriptionText>Outbound Warrant Documents</DocumentDescriptionText>
  <DocumentSubmitter>
    <ecf:EntityOrganization>
      <OrganizationIdentification>
        <IdentificationID>MN062015J</IdentificationID>
        <IdentificationCategoryText>Originating Agency Identification Number</IdentificationCategoryText>
      </OrganizationIdentification>
      <OrganizationName>Ramsey Criminal Downtown</OrganizationName>
    </ecf:EntityOrganization>
  </DocumentSubmitter>
  <ecf:SendingMDELocationID>
    <IdentificationID>https://is.courts.state.mn.us/PROD/WebServices/ServiceCatalog/DocumentNotificationService_4_0_svc</IdentificationID>
  </ecf:SendingMDELocationID>
  <ecf:SendingMDEProfileCode>urn:courts.state.mn.us:MQMessaging-1.0</ecf:SendingMDEProfileCode>
  <Case>
    <CaseTrackingID>62-CR-16-3099</CaseDocketID>
  </Case>
  <n1:FilingLeadDocument>
    <DocumentDescriptionText>Warrant Issued</DocumentDescriptionText>
    <DocumentFiledDate>
      <DateTime>2016-12-28</DateTime>
    </DocumentFiledDate>
    <DocumentIdentification>
      <IdentificationID>207420370</IdentificationID>
      <IdentificationCategoryText>Court Case Event ID</IdentificationCategoryText>
    </DocumentIdentification>
    <DocumentSequenceID>0</DocumentSequenceID>
    <ecf:DocumentMetadata>
      <j:RegisterActionDescriptionText>Warrant Issued</j:RegisterActionDescriptionText>
      <ecf:FilingAttorneyID/>
      <ecf:FilingPartyID/>
      <ecf:SpecialHandlingInstructions>ConfidentialDocument</ecf:SpecialHandlingInstructions>
    </ecf:DocumentMetadata>
    <ecf:DocumentRendition>
      <DocumentFileControllID>46094304</DocumentFileControllID>
      <ecf:DocumentRenditionMetadata>
        <ecf:DocumentAttachment>
          <BinaryBase64Object>UjBsR09EbGhZ0dTQUxNQUFBUUNBRU1tQ1p0dU1GUxhEUzhi</BinaryBase64Object>
          <BinaryFormatStandardName>application/pdf</BinaryFormatStandardName>
          <ecf:AttachmentSequenceID>0</ecf:AttachmentSequenceID>
        </ecf:DocumentAttachment>
      </ecf:DocumentRenditionMetadata>
    </ecf:DocumentRendition>
  </n1:FilingLeadDocument>
</n1:CoreFilingMessage>
```

8. Data Mapping to ECF MessageReceiptMessage

Line Ref Nbr	ECF/NIEM Element	Description	Include In Message?	Notes
1	MessageReceiptMessage	Root element	Always	This is the response to the CoreFilingMessage
	ecf:SendingMDELocationID		Always	
	nc:IdentificationID	This is the ECF service interaction profile	Always	URI identifying the receiving service.
	ecf:SendingMDEProfileCode		Always	Set to: urn:oasis:names:tc:legalxml- courtfiling:schema:xsd:WebServicesMessaging- 2.0
	j:CaseCourt		Always	
	nc:OrganizationIdentification		Always	
	nc:IdentificationID		Always	Use nc:IdentificationID from the document message (Court Originating Agency Identifier (ORI))
	j:CourtName		Always	Use nc:OrganizationName from the document message (name of the court).
	ecf:Error		Always	
	ecf:ErrorCode	Code to reference error	Always	Code will refer to error. Value can be: 0 If a SOAP fault is received during the document-send process it is assumed that the send process failed. The transmission will be retried according to current protocol, which is 5 times over an increasing time period. If failures continue, additional steps will be taken (which may include recycling the message or contacting the receiving agency).

Line Ref Nbr	ECF/NIEM Element	Description	Include In Message?	Notes
	ecf:ErrorText	Description of error	Always	Text description of error. Value can be: No error If a SOAP fault is received during the document-send process it is assumed that the send process failed. The transmission will be retried according to current protocol, which is 5 times over an increasing time period. If failures continue, additional steps will be taken (which may include recycling the message or contacting the receiving agency).

Sample

```
<?xml version="1.0" encoding="utf-8"?>
<MessageReceiptMessage xmlns="urn:oasis:names:tc:legalxml-courtfiling:schema:xsd:MessageReceiptMessage-4.0" xmlns:ecf="urn:oasis:names:tc:legalxml-courtfiling:schema:xsd:CommonTypes-4.0" xmlns:nc="http://niem.gov/niem/niem-core/2.0" xmlns:j="http://niem.gov/niem/domains/jxdm/4.0" >
  <ecf:SendingMDELocationID>
    <nc:IdentificationID>"receiving service URI"</nc:IdentificationID>
  </ecf:SendingMDELocationID>
  <ecf:SendingMDEProfileCode>urn:oasis:names:tc:legalxml-courtfiling:schema:xsd:WebServicesMessaging-2.0</ecf:SendingMDEProfileCode>
  <j:CaseCourt>
    <nc:OrganizationIdentification>
      <nc:IdentificationID>MN062015J</nc:IdentificationID>
    </nc:OrganizationIdentification>
    <j:CourtName>Ramsey Criminal Downtown</j:CourtName>
  </j:CaseCourt>
  <ecf:Error>
    <ecf:ErrorCode>0</ecf:ErrorCode>
    <ecf:ErrorText>No error</ecf:ErrorText>
  </ecf:Error>
</MessageReceiptMessage>
```

9. Document Notification Message Types

1. Arrest Warrant Documents

- a. This message is produced when an arrest warrant image is added to MNCIS and attached to a qualifying case event.
- b. It is produced for all case types.
- c. The image may correspond to data contained within the Warrant case notification.

10. Usage

Authorization

A consumer must be granted a specific right to use the Document Notification service. Access to documents is governed by MN Judicial Branch Policy 800(c) and document access rights must also be granted.

Subscriptions

Consumers must have a document subscription which is defined by the notification type, MNCIS Node(s), and Lines of Business/Case Types. This allows the consumer to receive notifications that most closely meet the business needs.

Receiving Notification Messages

Notifications can be “Pushed” to either web services or IBM MQSeries queues. Messages can also be “Pulled.” More information is provided in the ‘Integration Services Technical Overview’ document.

11. Document Revision History

Date	Author	Revision Highlights
12.14.2015	T. Amu	Created initial draft
06.03.2016	L. Iverson	Updated overview and error types for MessageReceiptMessage.
11.22.2016	L. Iverson	Updated CoreFilingMessage mapping descriptions
03.02.2017	L. Iverson	Final Updates
04.06.2017	L. Iverson	<u>Replaced</u> CoreFilingMessage/FilingConfidentialityIndicator With CoreFilingMessage/FilingLeadDocument/DocumentMetadata/SpecialHandlingInstructions <u>Replaced</u> CoreFilingMessage/FilingLeadDocument/DocumentRendition/DocumentIdentification With CoreFilingMessage/FilingLeadDocument/DocumentRendition/DocumentFileControlID