



User Authentication

Consumer Documentation

Contents

1. Preface	3
2. Overview	3
3. Messaging Overview	3
4. Messages Exchanged	4
5. Specific Elements - Submitted	4
Document Submitter.....	4
6. Specific Elements - Returned	5
Person Other Identification	5
End Date.....	5
7. eFS Credentials.....	5
8. Related Documentation	6
9. Data Mapping to ECF Messages.....	6
a) UserAuthenticationMessage mapping	7
b) UserAuthenticationResponseMessage mapping	8
10. Sample Messages.....	9
a) UserAuthenticationMessage.....	9
b) UserAuthenticationResponseMessage	10
Reference Table 1 - Errors.....	11
Document Revision History.....	11

1. Preface

This document provides technical consumer documentation for partners interested in using Integration Services to integrate with eFS. Specifically, this service is helpful for partners who wish to use Password Hashes to authenticate the eFS accounts of their users. (Password Hashes provide a way for a partner to store a value to authenticate their users to eFS, without storing their actual eFS password.)

2. Overview

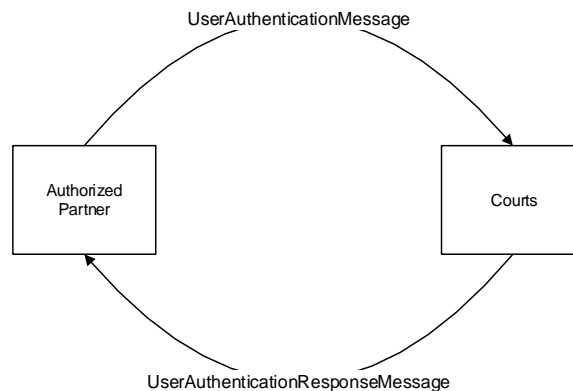
The User Authentication Service allows authorized external agencies to authenticate their user's eFS account and receive a Password Hash back from Court Integration Services. This Password Hash can then be used in lieu of that user's password for all other eFS integrations for the remainder of the day. Partners may want to use this service so they do not need to store their user's account passwords, and they also do not need to prompt their users for their password multiple times in a day.

The User Authentication Service is just one of the Court Integration services. Refer to the Court Integration Services website at <http://www.mncourts.gov/is> for a complete list of available services.

Messages for these services use elements from the Electronic Court Filing (ECF) 4.0 format whenever possible.

Minnesota Court Information System (MNCIS) is the system of record for the State of Minnesota District (Trial) Courts. eFile and eServe (eFS) is the web-based system that is used to electronically file documents into the State of Minnesota District (Trial) Courts. It also provides the means for performing service electronically for district court cases. Additional information about eFS can be found on MNCourts.gov, currently in the ["HOW DO I...? eFile in District Court" section](#).

3. Messaging Overview



At the point a partner wants to authenticate an eFS user, they submit a SOAP envelope to the courts containing a `UserAuthenticationMessage`. The `UserAuthenticationResponseMessage` will be a synchronous response to the partner indicating that the message was received and notifying of any initial errors with the transmission.

Messages that make up the User Authentication service use the SOAP message structure. See the [Integration Services Technical Overview](#) document for more information on the general format for Integration Service messages.

4. Messages Exchanged

Specific Elements - Submitted

This is the initial message sent to the courts to authenticate an eFS user and receive a Password Hash in return

Error! Reference source not found.

Response to the **User Authentication Message**. It will prove the appropriate Password Hash, or will alternatively provide details as to what error prevented the authentication from being successful.

5. Specific Elements - Submitted

Document Submitter

1. Required
 - a. `../nc:DocumentSubmitter/ecf:EntityPerson`
2. Submissions initiated by individual system users should include the `EntityPerson`
3. Name
 - a. `../nc:DocumentSubmitter/ecf:EntityPerson/nc:PersonName/..`
4. Individual User Identification
 - a. `../nc:DocumentSubmitter/ecf:EntityPerson/nc:IdentificationID`
 - b. The corresponding `../nc:DocumentSubmitter/ecf:EntityPerson/nc:IdentificationCategoryText` should be set to "Requesting System User Identification"
5. Originating Agency ORI
 - a. `../nc:DocumentSubmitter/ecf:EntityPerson/nc:IdentificationID`
 - b. The corresponding `../nc:DocumentSubmitter/ecf:EntityPerson/nc:IdentificationCategoryText` should be set to "Originating Agency Identification Number"

6. Specific Elements - Returned

Person Other Identification

1. Contains information about the authenticated user
2. Information Included
 - a. Identification ID
 - i. The user's Password Hash
 - b. Identification Source Text
 - i. The user's eFS Username

End Date

1. Should include a DateTime value indicating when the Password Hash included in the message will expire
2. Our goal is for Password Hashes will expire at the end of the day they are granted (technically around 2-3 AM the following morning).

7. eFS Credentials

In order for Court Integration Services to submit documents on behalf of your eFS firm, we need to have the credentials (ie username and password) for an eFS user in the eFS firm. This information will be passed to Integration Services within the SOAP Header of each individual request message. The Minnesota General Rule of Practice 14 indicates that a Registered User of eFS is a person. It would be against these rules to register an eFS account for the filing system, since the filing system is not a person.

The "is" namespace is "http://www.courts.state.mn.us/IS/02/"

eFS Username:

1. Required information.
2. ../soap:Header/is:FilingUser/is:Username

eFS Password:

1. Required information.
2. Two realistic options are available:
 - a. Plain text
 - i. ../soap:Header/is:FilingUser/is:Password
 - b. Encrypted
 - i. ../soap:Header/is:FilingUser/is:PasswordCipherText



- ii. Messages between the courts and our partners are already encrypted, so the additional encryption is optional and primarily a courtesy to mask passwords from technical staff that may be viewing the messages for troubleshooting purposes.
 - iii. Both the courts and the integration partner would have the ability to decrypt the password
 - iv. Implemented using the Cryptographic Application Programming Interfaces (CAPI) implementation of the Advanced Encryption Standard (AES) algorithm
 - v. Please contact Court Integration Services for more details if you are interested in using this functionality.
- c. Password Hash
- i. ../soap:Header/is:FilingUser/is>PasswordHash
 - ii. While it may technically be possible to use a Password Hash with the User Authentication service, I'm not sure why you would

8. Related Documentation

Oasis web site:

<https://www.oasis-open.org/>

Oasis ECF Specification:

<http://docs.oasis-open.org/legalxml-court filing/specs/ecf/v4.01/ecf-v4.01-spec/errata01/os/ecf-v4.01-spec-errata01-os-complete.doc>

Court XML Schema and Simple Types:

<http://mncourts.gov/Integration-Service/CourtXML.aspx>

9. Data Mapping to ECF Messages

Notes:

- Only subsets of elements from the ECF/NIEM message schemas are used by the User Authentication service. The elements used are represented below.
- Information regarding use is noted.
- Bolded elements in the ECF/NIEM Element column contain values.
- Shaded rows represent 'container' elements used to provide structure and context. Container elements will group other elements and do not contain values themselves.

a) UserAuthenticationMessage mapping

Line Ref Nbr	Depth	ECF/NIEM Element	Description	Include in Message?	Notes
0	0	UserAuthenticationMessage	Root element	Always	Partner request for authenticate an eFS User's credentials
1	1	ecf:SendingMDELocationID	Location to which messages can be sent	Always	
2	2	nc:IdentificationID	Callback URL of the sending service	Always	Partner's URL
3	1	ecf:SendingMDEProfileCode	ECF service interaction profile	Always	Set to: urn:oasis:names:tc:legalxml-courtfilingschema:xsd:WebServicesMessaging-2.0
4	1	ecf:DocumentSubmitter	Entity submitting the request	Always	
5	2	ecf:EntityPerson		Required	
6	3	nc:PersonName	Person submitting query	Always	
7	4	nc:PersonGivenName	First name		
8	4	nc:PersonMiddleName	Middle name		
9	4	nc:PersonSurName	Last name		
10	3	nc:PersonOtherIdentification	Originating-system identification of person requesting query	Always	
11	4	nc:IdentificationID		Always	Individual user identification.
12	4	nc:IdentificationCategoryText		Always	Set to: Requesting System User Identification
13	3	nc:PersonOtherIdentification	Organization of person requesting query	Always	
14	4	nc:IdentificationID		Always	Originating Agency's ORI
15	4	nc:IdentificationCategoryText		Always	Set to: Originating Agency Identification Number

b) UserAuthenticationResponseMessage mapping

Line Ref Nbr	Depth	ECF/NIEM Element	Description	Include in Message?	Notes
R0	0	UserAuthenticationResponseMessage	Root element	Always	Court response to an UserAuthenticationMessage
R1	1	ecf:SendingMDELocationID	Location to which messages can be sent.	Always	
R2	2	nc:IdentificationID	Callback URL of sending service	Always	Court URL: https://is.courts.state.mn.us/PROD/WebServices/ServiceCatalog/FilingReviewService_4_0.svc
R3	1	ecf:SendingMDEProfileCode	ECF service interaction profile.	Always	Determined by how partner has chosen to receive messages. Messages sent to a web service: urn:oasis:names:tc:legalxml-courtfiling:schema:xsd:WebServicesMessaging-2.0 Messages sent to a MQ Series queue: urn:courts:state:mn:us:MQMessaging-1.0 Messages pulled using a web services client application: urn:courts:state:mn:us:WebServicesRequest-1.0
R4	1	ecf:Error		Always	
R5	2	ecf:ErrorCode	Unique code identifying error.	Always	Defined in Reference Table 1 - Errors
R6	2	ecf:ErrorText	Description of error	Always	Defined in Reference Table 1 - Errors
R7	1	nc:PersonOtherIdentification		Optional	Will exist when the authentication was successful
R8	2	nc:IdentificationID	Password Hash	Always	
R9	2	nc:IdentificationCategoryText		Always	Will always be "Password Hash"
R10	2	nc:IdentificationSourceText	eFS Username	Always	Will be the username of the account authenticated
R11	1	nc:EndDate		Optional	Will exist when the authentication was successful

Line Ref Nbr	Depth	ECF/NIEM Element	Description	Include in Message?	Notes
R12	2	nc:DateTime		Always	Will be the date time the Password Hash will expire

10. Sample Messages

a) UserAuthenticationMessage

```
<UserAuthenticationMessage xmlns="http://www.courts.state.mn.us/UserAuthenticationMessage-4.0">
  <SendingMDELocationID xmlns="urn:oasis:names:tc:legalxml-court filing:schema:xsd:CommonTypes-4.0">
    <IdentificationID xmlns="http://niem.gov/niem/niem-core/2.0">https://efilingprovider.com:8000</IdentificationID>
    <IdentificationCategoryText xsi:nil="true" xmlns="http://niem.gov/niem/niem-core/2.0"/>
    <IdentificationSourceText xsi:nil="true" xmlns="http://niem.gov/niem/niem-core/2.0"/>
  </SendingMDELocationID>
  <SendingMDEProfileCode xmlns="urn:oasis:names:tc:legalxml-court filing:schema:xsd:CommonTypes-4.0">urn:oasis:names:tc:legalxml-court filing:schema:xsd:WebServicesMessaging-2.0</SendingMDEProfileCode>
  <DocumentSubmitter xmlns="http://niem.gov/niem/niem-core/2.0">
    <EntityPerson>
      <PersonBirthDate xsi:nil="true"/>
      <PersonCapability xsi:nil="true"/>
      <PersonDNA xsi:nil="true"/>
      <PersonEyeColorCode xsi:nil="true"/>
      <PersonHairColorCode xsi:nil="true"/>
      <PersonHeightMeasure xsi:nil="true"/>
      <PersonLanguageEnglishIndicator xsi:nil="true"/>
      <PersonName>
        <PersonGivenName>George</PersonGivenName>
        <PersonSurName>Jetson</PersonSurName>
      </PersonName>
      <PersonOtherIdentification>
        <IdentificationID>JetsonG</IdentificationID>
        <IdentificationCategoryText>Requesting System User
Identification</IdentificationCategoryText>
      </PersonOtherIdentification>
    </EntityPerson>
  </DocumentSubmitter>
</UserAuthenticationMessage>
```

```

    <PersonOtherIdentification>
      <IdentificationID>MN001013A</IdentificationID>
      <IdentificationCategoryText>Originating Agency Identification
Number</IdentificationCategoryText>
    </PersonOtherIdentification>
    <PersonPrimaryLanguage xsi:nil="true"/>
    <PersonSexCode xsi:nil="true"/>
    <PersonStateIdentification xsi:nil="true"/>
    <PersonTaxIdentification xsi:nil="true"/>
    <PersonWeightMeasure xsi:nil="true"/>
  </EntityPerson>
</DocumentSubmitter>
</UserAuthenticationMessage>

```

b) UserAuthenticationResponseMessage

```

<UserAuthenticationResponseMessage xmlns="http://www.courts.state.mn.us/UserAuthenticationResponseMessage-4.0">
  <SendingMDELocationID xmlns="urn:oasis:names:tc:legalxml-court filing:schema:xsd:CommonTypes-4.0">
    <IdentificationID xmlns="http://niem.gov/niem/niem-
core/2.0">https://devqais.courts.state.mn.us/DEVE/WebServices/ElectronicCourtFiling/FilingReviewService_4_0.svc</Iden
tificationID>
  </SendingMDELocationID>
  <SendingMDEProfileCode xmlns="urn:oasis:names:tc:legalxml-court filing:schema:xsd:CommonTypes-
4.0">urn:oasis:names:tc:legalxml-court filing:schema:xsd:WebServicesMessaging-2.0</SendingMDEProfileCode>
  <Error xmlns="urn:oasis:names:tc:legalxml-court filing:schema:xsd:CommonTypes-4.0">
    <ErrorCode>0</ErrorCode>
    <ErrorText>No error</ErrorText>
  </Error>
  <PersonOtherIdentification xmlns="http://niem.gov/niem/niem-core/2.0">
    <IdentificationID>5f460cb8-ff22-41f3-98c5-b68cdb3df461</IdentificationID>
    <IdentificationCategoryText>Password Hash</IdentificationCategoryText>
    <IdentificationSourceText>PartnerAgencyeFSTest1@courts.state.mn.us</IdentificationSourceText>
  </PersonOtherIdentification>
  <EndDate xmlns="http://niem.gov/niem/niem-core/2.0">
    <DateTime>6102-08-16T18:20:57</DateTime>
  </EndDate>
</UserAuthenticationResponseMessage>

```

Reference Table 1 - Errors

Errors

ErrorCode	ErrorText	Additional Notes
0	No Error	
13	Service currently unavailable	
34	Technical Error ...	Could be a variety of things. If error continues to occur, please contact Court Integration Services to collaborate in identifying and resolving the root issue.
48	eFS Credentials Missing	
49	Unknown eFS User	
50	Inactive eFS User	
79	eFS Account Locked. Please reset password through eFS website.	

Soap Errors

ErrorCode	ErrorText	Additional Notes
Invalid Security Token	An invalid security token was provided	Refers to the Integration Services account, not the eFS account
Unauthorized Access	Consumer does not have rights to service	
Invalid Message	The <invalid element> is invalid because <error>.	Schema validation errors.
Version Mismatch	An invalid message version was provided	

Document Revision History

Date	Author	Description
2019-11-05	E. Sczygelski	Initial draft
2020-01-17	E. Sczygelski	Added error code 79
2020-02-19	E. Sczygelski	Documentation published – service is now out of pilot and part of the general service catalog