



adverse CHILDHOOD EXPERIENCES IN MINNESOTA

FINDINGS & RECOMMENDATIONS BASED ON THE
2011 Minnesota Behavioral Risk Factor Surveillance System

EXECUTIVE SUMMARY





... by reducing ACEs
we can reliably
expect a reduction
in many
ACE-related
health and social
problems



This report marks the first time that the Minnesota Department of Health has collected data regarding the effects of adverse childhood experiences (ACEs) on the lifelong health and well-being of adults in Minnesota. For two decades, research by the Centers for Disease Control and Prevention (CDC) and other states has demonstrated over and over again the powerful impact of ACEs on health, behavioral, and social problems. An extensive and growing body of research documents that adverse childhood experiences (ACEs)—those causing toxic levels of stress or trauma before age 18—are specifically linked to poor physical and mental health, chronic disease, lower educational achievement, lower economic success, and impaired social success in adulthood.



In 2008, the CDC developed a set of ACE questions for states to use in the **Behavioral Risk Factor Surveillance System (BRFSS)**, a survey used by individual states to determine the status of their residents' health based on behavioral risk factors. In 2011, Minnesota became the 18th state to add the ACE questions to the BRFSS survey.

Minnesota's 2011 BRFSS **results are consistent with the findings from the initial ACE Study and other states' ACE studies.** First, **ACEs are common.** Over half of Minnesotans have experienced at least one ACE. In particular, ACEs are more common among Minnesotans who did not graduate from high school, who were unmarried, who rented rather than owned their own home, who were unemployed, or who worried about paying their mortgage or rent or about buying nutritious food. Second, **ACEs frequently occur together.** In Minnesota, over half of Minnesotans experiencing ACEs had more than two ACEs. Third, **ACEs have a strong and cumulative impact on the health and functioning of adults.** For example, Minnesotans with more ACEs were more likely to rate their health as fair or poor, to have been diagnosed with depression or anxiety, to report smoking and chronic drinking, to have been diagnosed with asthma, and to be obese.

Despite all of this, adversity is not the end of the story. There is increasing understanding about resilience and what families, communities, and systems can do to protect children and support adults with ACEs. Resilience is positive adaptation within the context of significant adversity. In the face of adversity, neither resilience nor disease is a certain outcome. The hope of this research is to demonstrate that **by reducing ACEs, we can reliably expect a reduction in many ACE-related health and social problems.** Communities and states such as Washington have improved health and well-being by rallying around the concept of resiliency and reducing ACEs.

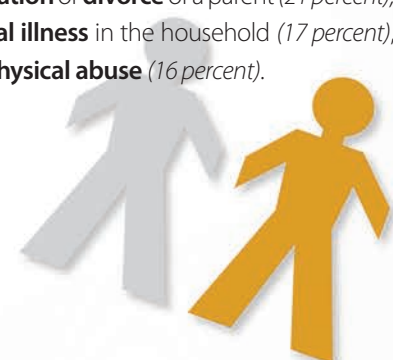
What is an ACE?

A **N ADVERSE CHILDHOOD EXPERIENCE (ACE)** describes a **traumatic experience** in a person's life occurring before the age of 18 that the person recalls as an adult. In the Minnesota BRFSS survey, respondents were asked if they had experienced any of the following **nine types of ACEs**: physical abuse, sexual abuse, verbal abuse, mental illness of a household member, problematic drinking or alcoholism of a household member, illegal street or prescription drug use by a household member, divorce or separation of a parent, domestic violence towards a parent, and incarceration of a household member.

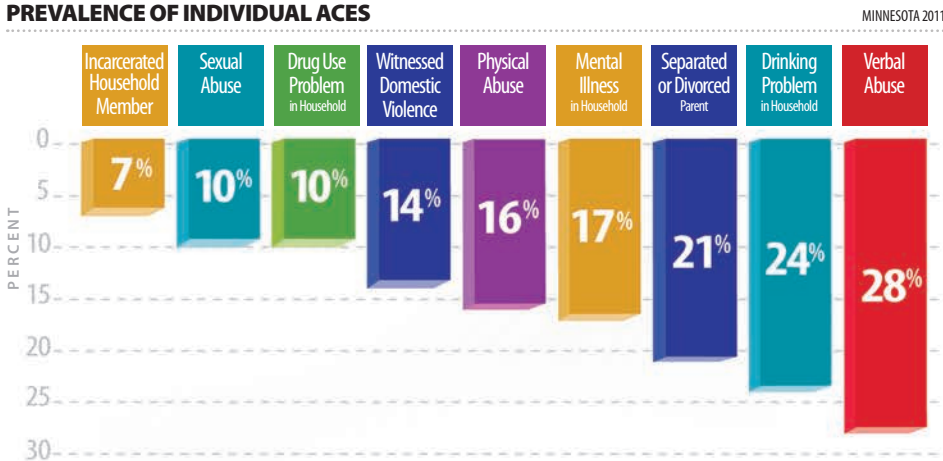


ACEs are common among Minnesotans

Results indicate that ACEs are common among Minnesota adults. **Over half** of the Minnesotans responding to ACE module questions reported experiencing at least one ACE in childhood. The five most common ACEs reported by Minnesotans in the survey are **verbal abuse** (28 percent), living with a **problem drinker** (24 percent), **separation or divorce** of a parent (21 percent), **mental illness** in the household (17 percent), and **physical abuse** (16 percent).



PREVALENCE OF INDIVIDUAL ACEs



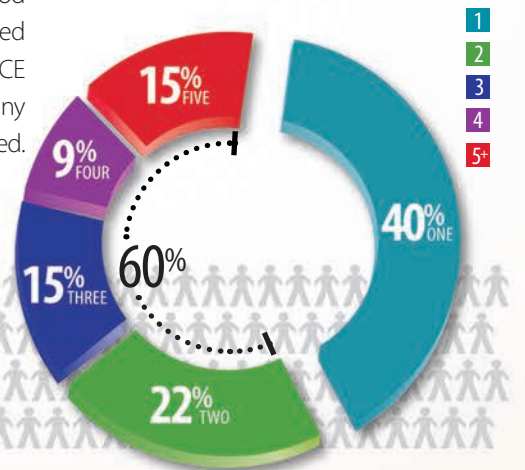
ACEs often occur together

Minnesotans reporting one ACE are more likely to report other ACEs in childhood. The chart below illustrates that for those Minnesotans with at least one ACE, **60 percent** have **two or more** ACEs and **15 percent** have **five or more** ACEs.

The ACE score is a measure of cumulative exposure to particular adverse childhood conditions. Exposure to any single ACE condition is counted as one point. If a person experienced none of the conditions in childhood, the ACE score is zero. Points are then totaled for a final ACE score. It is important to note that the ACE score does not capture the frequency or severity of any given ACE in a person's life, focusing instead on the number of ACE conditions experienced. In addition, the ACE conditions used in the ACE Study reflect only a select list of experiences.

DISTRIBUTION OF ACEs

MINNESOTA 2011
AMONG THOSE WITH AT LEAST 1 ACE

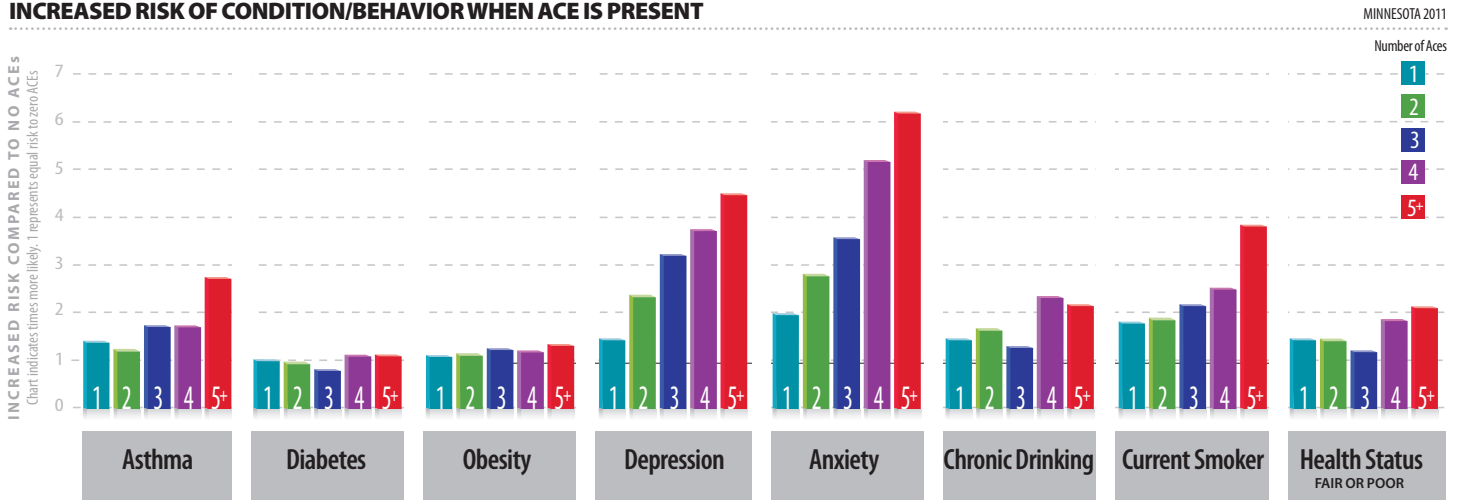


55% of Minnesotans report **experiencing one or more ACE** in childhood

ACEs have a strong and cumulative impact on the health and functioning of adults in Minnesota

As the number of ACEs increases, the risk for health problems increases in a strong and graded fashion in areas such as alcohol and substance abuse, depression, anxiety, and smoking. The chart below shows the association between ACEs of Minnesotans and chronic health conditions later in life. The risk for anxiety, depression and smoking increases as the numbers of ACEs increases. However, the correlation between ACEs and obesity or diabetes is not as evident

INCREASED RISK OF CONDITION/BEHAVIOR WHEN ACE IS PRESENT



among Minnesotans. While there is a definite increased risk of asthma for Minnesotans with five or more ACEs, there is no clear pattern for those with four or fewer ACEs. There is also a

clear increase in reported chronic drinking for Minnesotans with four or more ACEs; however, the association between one to three ACEs and reported chronic drinking is less clear.

Minnesotans with more ACEs are more likely to rate themselves as having fair or poor health as compared to those with no ACEs.

Summary of policy recommendations

Based on the findings of Minnesota's ACE Study, we recommend the following strategies to reduce ACEs and build resiliency in Minnesota communities.

Increase awareness of ACEs, their impact on health and well-being, and Minnesotans' capacity to act.

1. Develop a **communication strategy** that focuses on the **social and economic benefits** of reducing and preventing ACEs in Minnesota.
2. Work with the state's education, child welfare, mental health, public health, health care, substance abuse, juvenile justice, corrections, and public safety systems to **increase awareness** of the impact of ACEs on the people these agencies serve.

Enhance the capacity of communities to **prevent and respond** to ACEs.

3. Support and **develop resilience** through **investments** that support community, government, and philanthropy partnerships.
4. Build **collaborative leadership** to **form a vision** and support change.

Continue to **collect** Minnesota-specific **data** on the relationship among ACEs, health outcomes, and resilience.

5. Designate **funds** to continue the collection, analysis, and dissemination of **ACE data** from Minnesota residents.
6. Develop a thorough **inventory** of existing agency and community **efforts** to **reduce ACEs** and **support resilience**.



Produced by the **Minnesota Department of Health**

625 Robert Street N. • PO Box 64975 • St. Paul, MN 55164-0975
Phone: 651-201-5000 Toll-free: 888-345-0823 TTY: 651-201-5797
www.health.state.mn.us 01/2013