

Summary Information on  
Juvenile Delinquency Petitions in  
Minnesota Courts

Calendar Year 2000

Presented to the House and Senate Crime Prevention Committees  
Pursuant to M.S. § 260B.173

September 2001

Prepared by  
Research and Evaluation  
Court Services Division  
State Court Administrator's Office  
**Minnesota Supreme Court**

## **Juvenile Delinquency Petitions in Minnesota Courts Calendar Year 2000**

### **Highlights**

- In calendar year 2000 over 25,000 delinquency petitions were filed in Minnesota courts; approximately the same number as in 1999. Slightly over half (53%) of these were for misdemeanor offenses, 38% were for felonies and the remaining 10% were for gross misdemeanors.
- The Fourth Judicial District had the largest number of petitions (4,933), followed by the First District (4,192) and the Tenth District (3,399). These three districts account for almost half (49%) of the delinquency petitions filed statewide.
- For delinquency petitions filed in 2000, the average age of the juveniles involved was fifteen. Over 80% were fourteen years old or older.
- Seventy-eight percent of all delinquency petitions filed in 2000 involved males; the percentage is higher, at 85%, for felony delinquencies.
- Forty-one percent of delinquency petitions involved juveniles who were white; 15% African American; 5% American Indian; 3% Asian; and 2% Hispanic. In the remaining 34% of petitions, however, race is unknown.
- The largest proportion of delinquency petitions involve property offenses (48% in 2000). The most common alleged felony delinquency offenses were Theft and Burglary, which together account for half of the felony filings.
- The available data indicate that in 69% of the juvenile delinquency petitions disposed in 2000 there was either an admission of guilt or a finding of guilt or delinquency.
- The most common dispositional outcomes in 2000 were financial sanctions (including fines, restitution and community work service), probation and treatment or counseling. Letters of apology to victims were also very common.

## Summary Information on Juvenile Delinquency Petitions in Minnesota Courts Calendar Year 2000

Juvenile courts in Minnesota hear a large number and wide variety of cases each year. In calendar year 2000 there were 74,122 cases filed in juvenile courts in Minnesota. Thirty-four percent of these involved juvenile delinquency petitions. Delinquency petitions are filed when children from age ten through age seventeen are alleged to have committed acts that would be crimes if committed by adults. Only Status Offenses (acts which are unlawful for juveniles but which would not be unlawful for adults) are more frequent; they account for almost half of all juvenile petitions filed. Termination of Parental Rights (TPR) and Truancy/Runaway cases each account for 2% of the annual petitions and CHIPS cases (other cases involving Children in Need of Protection and Services) account for the remaining 7%.

This report presents summary information on juvenile delinquency petitions filed or disposed in Minnesota in calendar year 2000. The Appendix includes aggregated information by judicial district.

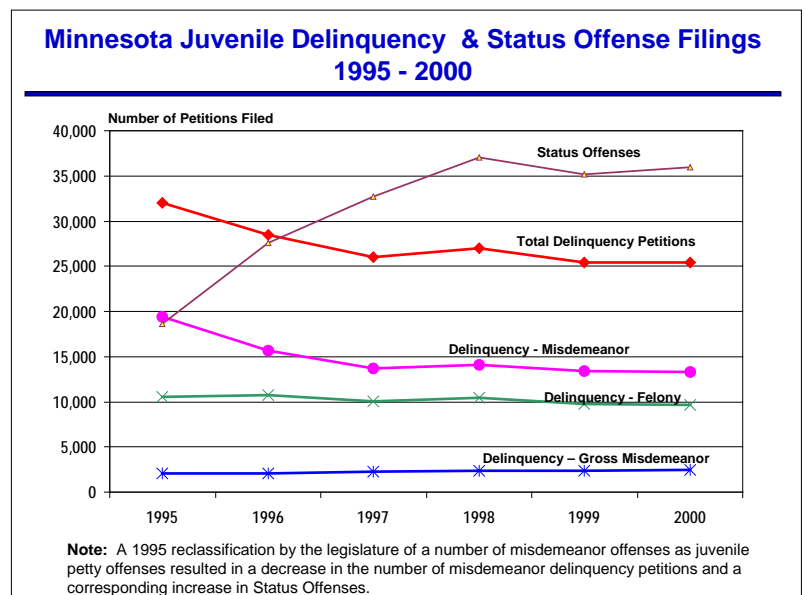
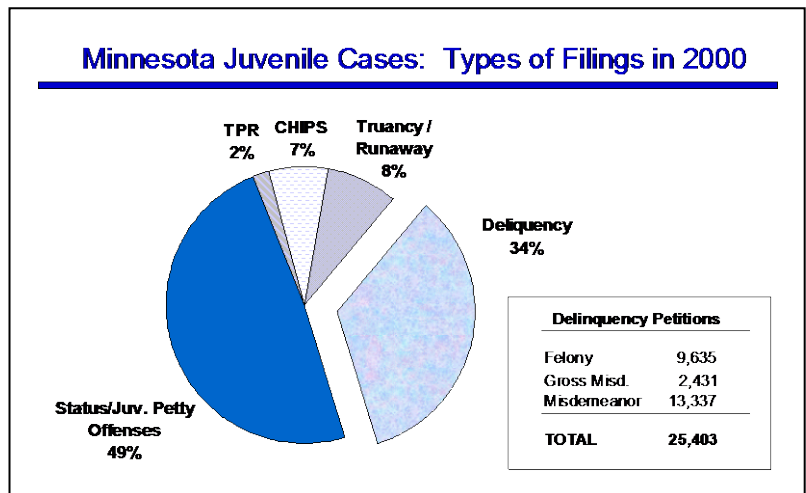
### VOLUME AND PETITION TYPE

In calendar year 2000, over 25,000 delinquency petitions were filed in Minnesota courts; approximately the same number as in 1999.

Between 1995 and 1997, there was a marked decrease in

misdemeanor petitions, and a corresponding decrease in total delinquency filings. This decrease was due primarily to a 1995 reclassification by the legislature of a number of misdemeanor offenses into juvenile petty offenses. Juvenile petty offenses are not classified as delinquency cases; in the chart above, they are included in the status offense group.

Delinquency petitions are grouped into three categories, based on the level of the most serious alleged act: felonies, gross misdemeanors, and misdemeanors. Statewide, slightly over half (53%) of delinquency petitions filed in 2000 were for misdemeanor offenses, 38% for felonies and the remaining 10% for gross misdemeanors.



**GEOGRAPHIC DISTRIBUTION**

In 2000, the Fourth Judicial District had the largest number of juvenile delinquency petitions (4,933), followed by the First District with 4,192 petitions and the Tenth with 3,399. These three districts account for almost half (49%) of the delinquency petitions filed statewide.

The distribution of cases across districts in 2000 was similar to that in 1999. The number of petitions in each district, however, does fluctuate over time. For example, the increase in filings in the First District in 2000 followed decreases in both 1999 and 1998. In the Fourth District, petitions were down slightly in 2000, but remained higher than in 1997. In 2000 the Fourth District accounted for 19.4% of the cases in the state as compared to 16% in 1997. Although 1997 appears to have been an unusually low year for filings in the district, the subsequent increases also appear to coincide with increased enforcement efforts such as the CODEFOR program in Minneapolis.

**Juvenile Delinquency Filings**

Jud. District		1997	1998	1999	2000
1	#	4,117	3,981	3,911	4,192
	%	15.9	14.8	15.4	16.5
2	#	2,462	2,592	2,337	2,781
	%	9.5	9.6	9.2	10.9
3	#	2,090	1,982	2,003	1,713
	%	8.0	7.4	7.9	6.7
4	#	4,168	5,352	5,172	4,933
	%	16.0	19.9	20.3	19.4
5	#	1,546	1,368	1,427	1,411
	%	6.0	5.1	5.6	5.6
6	#	1,723	1,653	1,660	1,509
	%	6.6	6.1	6.5	5.9
7	#	2,109	2,184	1,949	1,990
	%	8.1	8.1	7.7	7.8
8	#	973	1,033	798	904
	%	3.7	3.8	3.1	3.6
9	#	2,991	2,744	2,583	2,571
	%	11.5	10.2	10.1	10.1
10	#	3,793	4,063	3,621	3,399
	%	14.6	15.1	14.2	13.4
Statewide	#	25,972	26,952	25,461	25,403
	%	100	100	100	100

The distribution of filings by offense level also varies somewhat by district. The First District had the second largest number of total delinquency petitions (after the Fourth District); however, the Fourth, Tenth, and Second Districts had the greatest number of felony petitions. A higher proportion of petitions in the First District (68%) were for misdemeanor offenses, as

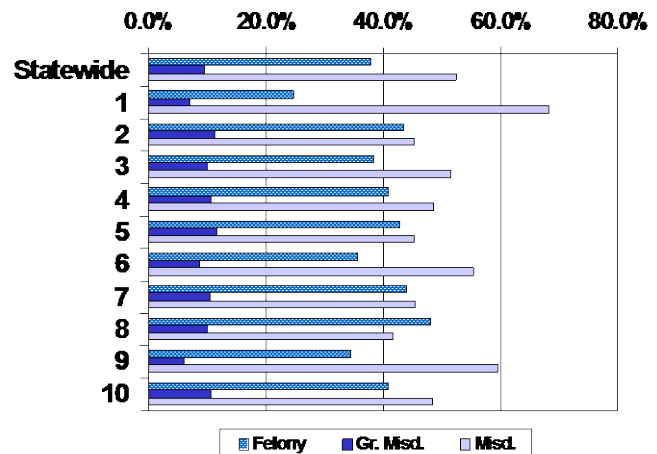
compared to the statewide average (53%).

In almost all districts, the largest proportion of delinquency petitions were for misdemeanor offenses, followed by felonies and gross misdemeanors. In the Eighth Judicial District, however, 48% of delinquency petitions involved alleged felonies and 42% involved misdemeanors.

**Type of Juvenile Delinquency Petitions Filed in 2000 -- By Type**

Jud. Dist.	Total # Del. Petitions	Type of Del. Petition		
		Felony	Gross Misd.	Misd.
1	4,192	1,034	297	2,861
2	2,781	1,206	316	1,259
3	1,713	657	172	884
4	4,933	2,012	526	2,395
5	1,411	607	165	639
6	1,509	538	135	836
7	1,990	875	210	905
8	904	436	90	378
9	2,571	884	155	1,532
10	3,399	1,386	365	1,648
<b>Total</b>	<b>25,403</b>	<b>9,635</b>	<b>2,431</b>	<b>13,337</b>

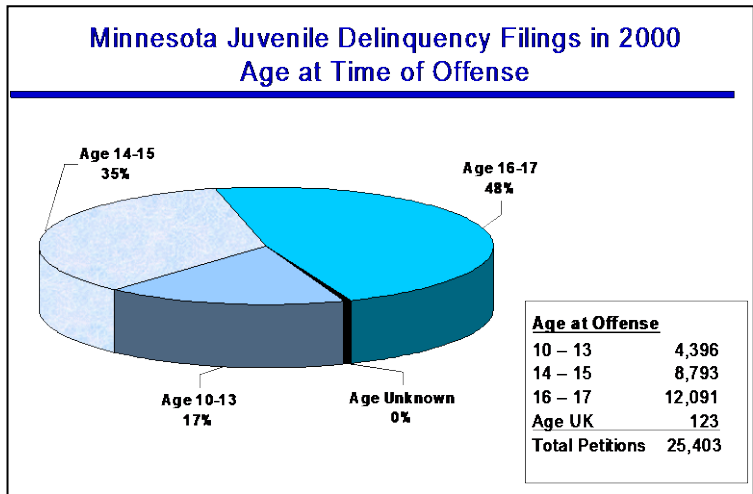
**Juvenile Delinquency Filings in 2000  
Type by Judicial District**



**AGE, SEX AND RACE**

In 2000, the average age of juveniles involved in delinquency petitions was fifteen. Over 80% of the juveniles were fourteen years old or older.

Seventy-eight percent of all delinquency petitions filed in 2000 involved males; the percentage is higher, at 85%, for felony delinquencies.



Only limited information is currently available on race; data are missing for approximately one-third of the petitions. Of the 25,403 juvenile delinquency petitions filed in 2000, 41% involved juveniles who were white; 15% African American; 5% American Indian; 3% Asian; and 2% Hispanic. In the remaining 34% of petitions, race is unknown.

offenses, 4% involved drug offenses and 20% involved other types of crimes. The First and Ninth Districts were the only districts where person offenses accounted for less than a fourth of all filings (20% and 22%, respectively).

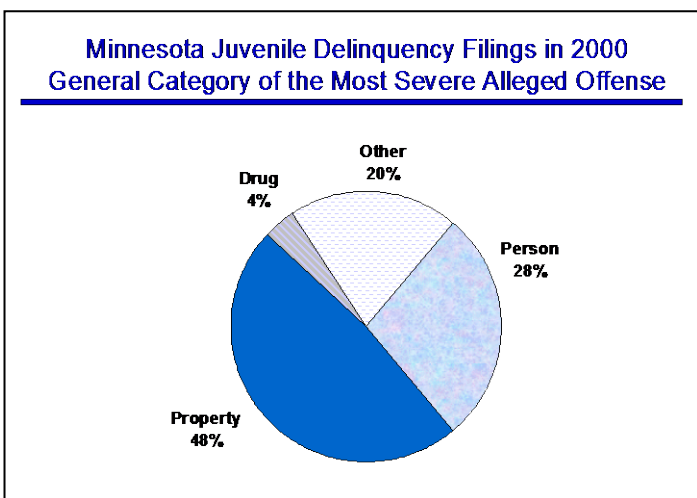
common offenses in this category are disorderly conduct, non-person weapon offenses, juvenile alcohol offenses, escape and obstructing the legal process.

**OFFENSE TYPE**

The largest proportion of delinquency petitions involve property offenses (48% in 2000). Twenty-eight percent of filings in 2000 involved person

When examined by petition type, a higher proportion of misdemeanors involve person offenses (33%) as compared to felonies (23%) and gross misdemeanors (16%). This is due to the large number of misdemeanor level assaults. The “Other” category consists primarily of non-felony offenses (87%). The most

The most common alleged felony offenses were Theft and Burglary, which together account for half of the felony filings. Common felony person offenses included assault and criminal sexual conduct. Of the 9,635 felony delinquency petitions filed in 2000, 17 involved a homicide as the most severe offense at filing.



**Felony Delinquency Filings – 2000  
Most Severe Offense**

Offense	Number	Percent
Homicide	17	0.2%
Crim. Sexual Conduct	565	5.9%
Assault	1,391	14.4%
Robbery	240	2.5%
Burglary	1,945	20.2%
Theft	2,909	30.2%
Arson	105	1.1%
Drugs	659	6.8%
Weapons	383	4.0%
Stolen Property	205	2.1%
Property Damage	474	7.8%
Other	469	4.9%
<b>Total</b>	<b>9,635</b>	<b>100%</b>

**Juvenile Delinquency Petitions Disposed in CY 2000  
Petitions with a Finding/Admission of Guilt on at Least One Count  
Dispositional Outcomes/Sanctions By Petition Type**

Petition Type at Disposition	DOC Commitment/Jail	DOC Commitment/Jail – Stayed	Short-Term Custody	Supervision	Evaluation / Outpatient Treatment	In-Patient Treatment	Other Out of Home Placement	Financial Sanctions	Other Sanctions
<b>Felony</b>	1,034	367	297	3,916	1,335	316	259	3,790	2,022
<b>Gross Misdemeanor</b>	218	76	60	1,289	465	68	51	1,650	798
<b>Misdemeanor</b>	755	215	199	5,240	2,028	222	247	5,711	3,556
<b>Total</b>	2,007	658	556	10,445	3,828	606	557	11,151	6,376

The outcome categories for cases disposed in calendar year 2000 differ slightly from categories used in earlier legislative reports; in addition, the above figures only represent cases for which there was a finding or admission of guilt for the case as a whole or for at least one individual count. The categories above include the following types of outcomes:

- DOC Commitment/Jail:* Commitment to a Department of Corrections (DOC) or local facility.
- DOC Commitment/Jail – Stayed:* Commitments to DOC and local facilities that are stayed.
- Short-Term Custody:* Jails, lock-ups, and secure detention facilities not included as commitments.
- Supervision:* Probation, home detention, electronic monitoring, appointment of Guardian ad Litem.
- Evaluation/Outpatient Treatment and Inpatient Treatment:* Psychiatric, chemical dependency, sex offender or medical. Evaluations are included in the outpatient treatment category.
- Other Out of Home Placement:* Out of home placements other than jail/DOC commitments.
- Financial Sanctions:* Fines, restitution, court funds.
- Other Sanctions:* School attendance, drug testing, driver's license suspension, no new arrests, no contact orders, and letters of apology. Apology letters account for approximately 1/3 of this category.

**CASES DISPOSED IN 2000**

There were 24,484 delinquency petitions with an initial disposition in calendar year 2000 (8,535 felonies, 2,723 gross misdemeanors, and 13,226 misdemeanors).

Dispositions

The available data indicate that in 69% of the juvenile delinquency petitions disposed in 2000 there was an admission or a finding of guilt or delinquency. The rate was slightly higher for felonies and gross misdemeanors than for misdemeanors (76% and 79%, as compared to 65%). The percentages are based on petitions that had a finding,

admission, or adjudication at the case level or for any individual count.

Jud. District	Percent Conv. / Admit Guilt
1	64%
2	84%
3	73%
4	63%
5	74%
6	79%
7	76%
8	67%
9	59%
10	76%
Statewide	70%

There is currently only limited information available on specific case dispositions. Based on the data available, however, it is estimated that, statewide, in approximately

17% of petitions all counts are dismissed; in approximately 10% of the petitions, adjudication is withheld or the case is continued for dismissal. It is expected that the new data systems discussed in the Data Source section below will allow for a more in depth examination of disposition types in future reports.

Dispositional Outcomes

The most common dispositional outcomes in 2000 were financial sanctions (including fines, restitution and community work service), supervision, probation and evaluation and treatment or

counseling. Letters of apology to victims were also very common.

Information on disposition outcomes by the case type at disposition is displayed in the table on the previous page. In interpreting this information, it is important to note that multiple outcomes are possible for a single delinquency petition. For example, a juvenile may be required to be under supervision/probation, to participate in treatment, and also be responsible for financial sanctions such as fines or restitution. Also, because the available data allow for only a limited number of sanctions to

be recorded, some outcomes may be undercounted. Tables displaying dispositional outcomes aggregated by judicial district are included in the Appendix.

#### **DATA SOURCES**

The data in this report are based on juvenile SJIS (State Judicial Information System) data. SJIS merges data from TCIS (Total Court Information System – the operational data system used for juvenile cases in all counties except Scott) with additional Scott county data provided to the State

Court Administrator's Office directly by the county.

SJIS is being replaced by a new data warehouse, CJAD (Criminal Justice Analytical Data) along with a datamart designed to ease access to the information. CJAD will increase the amount of information available for analysis and will contain a greater level of detail than SJIS. Future reports on delinquency petitions will be able to use that richer data source and allow for a greater depth of analysis of the processing of juvenile court cases.

**- APPENDIX -**

<b>Delinquency Petitions Filed in CY 2000</b>	
<b>By County</b>	

County	Total Number of Delinquency Petitions	County	Total Number of Delinquency Petitions
1 Aitkin	65	45 Marshall	27
2 Anoka	1,234	46 Martin	133
3 Becker	234	47 Meeker	115
4 Beltrami	348	48 Mille Lacs	173
5 Benton	147	49 Morrison	113
6 Bigstone	20	50 Mower	254
7 Blue Earth	231	51 Murray	33
8 Brown	122	52 Nicollet	157
9 Carlton	181	53 Nobles	87
10 Carver	439	54 Norman	21
11 Cass	365	55 Olmsted	435
12 Chippewa	45	56 Otter Tail	222
13 Chisago	188	57 Pennington	101
14 Clay	206	58 Pine	169
15 Clearwater	99	59 Pipestone	55
16 Cook	12	60 Polk	171
17 Cottonwood	61	61 Pope	27
18 Crow Wing	281	62 Ramsey	2,781
19 Dakota	2,143	63 Red Lake	29
20 Dodge	93	64 Redwood	130
21 Douglas	114	65 Renville	69
22 Faribault	93	66 Rice	256
23 Fillmore	60	67 Rock	34
24 Freeborn	135	68 Roseau	64
25 Goodhue	142	69 St. Louis	1,250
26 Grant	32	70 Scott	744
27 Hennepin	4,933	71 Sherburne	376
28 Houston	54	72 Sibley	132
29 Hubbard	207	73 Stearns	585
30 Isanti	179	74 Steele	172
31 Itasca	429	75 Stevens	13
32 Jackson	53	76 Swift	74
33 Kanabec	112	77 Todd	139
34 Kandiyohi	352	78 Traverse	14
35 Kittson	11	79 Wabasha	77
36 Koochiching	106	80 Wadena	57
37 Lac Qui Parle	31	81 Waseca	87
38 Lake	66	82 Washington	531
39 Lake of the Woods	53	83 Watonwan	114
40 Le Sueur	215	84 Wilkin	52
41 Lincoln	14	85 Winona	90
42 Lyon	94	86 Wright	610
43 McLeod	377	87 Yellow Medicine	60
44 Mahnomen	194		

**Statewide**

**25,403**



**Type of Juvenile Delinquency Petition Filed in 2000  
By Judicial District**

Jud. District		Type of Delinquency Petition			Total Del. Petitions (all types)
		Felony	Gross Misd.	Misd.	
1	#	1,034	297	2,861	4,192
	%	24.7	7.1	68.2	100.0
2	#	1,206	316	1,259	2,781
	%	43.4	11.4	45.3	100.0
3	#	657	172	884	1,713
	%	38.4	10.0	51.6	100.0
4	#	2,012	526	2,395	4,933
	%	40.8	10.7	48.6	100.0
5	#	607	165	639	1,411
	%	43.0	11.7	45.3	100.0
6	#	538	135	836	1,509
	%	35.7	8.9	55.4	100.0
7	#	875	210	905	1,990
	%	44.0	10.6	45.5	100.0
8	#	436	90	378	904
	%	48.2	10.0	41.8	100.0
9	#	884	155	1,532	2,571
	%	34.4	6.0	59.6	100.0
10	#	1,386	365	1,648	3,399
	%	40.8	10.7	48.5	100.0
Statewide	#	9,635	2,431	13,337	25,403
	%	37.9	9.6	52.5	100.0

**Delinquency Petitions Filed in 2000  
Gender and Race by Type of Petition**

	Type of Delinquency Petition			Total
	Felony	Gr. Misd.	Misd.	
Male	8,174	1,788	9,826	19,788
Female	1,433	641	3,471	5,545
Unknown	28	2	40	70
<b>Total</b>	9,635	2,431	13,337	25,403
White	3,809	1,042	5,559	10,410
African American	1,412	408	2,074	3,894
American Indian	429	85	639	1,153
Hispanic	174	37	240	451
Asian	446	88	327	861
Unknown	3,365	771	4,498	8,634
<b>Total</b>	9,635	2,431	13,337	25,403

**Age at Offense by Judicial District  
Juvenile Delinquency Petitions Filed in 2000**

Jud. District	10	11	12	13	14	15	16	17	Unknown	Total
1	26	66	145	369	599	820	1,018	1,123	26	4,192
2	44	72	176	326	455	516	567	610	15	2,781
3	19	41	84	181	246	304	371	449	18	1,713
4	48	117	234	511	754	996	1,114	1,156	3	4,933
5	16	32	43	140	209	259	327	377	8	1,411
6	23	27	75	145	261	312	324	335	7	1,509
7	26	33	98	155	262	388	505	504	19	1,990
8	15	13	47	65	122	175	212	252	3	904
9	22	54	112	224	416	492	633	610	8	2,571
10	29	67	143	333	491	716	776	828	16	3,399
<b>Statewide</b>	268	522	1,157	2449	3,815	4,978	5,847	6,244	123	25,403

**Gender by Judicial District  
Juvenile Delinquency Petitions Filed in 2000**

Jud. District	Male	Female	UK	Total
1	3,169	1,021	2	4,192
2	2,143	632	6	2,781
3	1,318	388	7	1,713
4	3,840	1,091	2	4,933
5	1,059	319	33	1,411
6	1,181	326	2	1,509
7	1,595	394	1	1,990
8	750	154	0	904
9	1,940	619	12	2,571
10	2,793	601	5	3,399
<b>Statewide</b>	19,788	5,545	70	25,403

**Race by Judicial District  
Juvenile Delinquency Petitions Filed in 2000**

Jud. District	White	African American	American Indian	Hispanic	Asian	Unknown	Total
1	2,955	325	34	116	73	689	4,192
2	1,053	930	76	102	405	215	2,781
3	767	98	0	67	18	763	1,713
4	1,616	2,280	347	82	325	283	4,933
5	535	21	69	30	7	749	1,411
6	813	45	230	9	1	411	1,509
7	936	69	115	5	4	861	1,990
8	343	4	23	20	1	513	904
9	274	2	239	14	1	2,041	2,571
10	1,118	120	20	6	26	2,109	3,399
<b>Statewide</b>	10,410	3,894	1,153	451	861	8,634	25,403

**Juvenile Delinquency Petitions Filed in 2000**  
**Type of Alleged Offense By Type of Delinquency Petition**  
 (most serious alleged offense)

Type of Delinquency Petition		Offense Category				Total
		Person	Property	Drug	Other	
Felony	#	2,216	6,125	645	649	9,635
	%	23.0	63.6	6.7	6.7	100.0
Gross Misd.	#	387	1,183	17	844	2,431
	%	15.9	48.7	0.7	34.7	100.0
Misd.	#	4,422	4,927	340	3,648	13,337
	%	33.2	36.9	2.5	27.4	100.0
Statewide	#	7,025	12,235	1,002	5,141	25,403
	%	27.7	48.2	3.9	20.2	100.0

**Juvenile Delinquency Petitions Filed in 2000**  
**Type of Alleged Offense By Judicial District**  
 (most serious alleged offense)

Judicial District		Offense Category				Total
		Person	Property	Drug	Other	
1	#	834	2,184	215	959	4,192
	%	19.9	52.1	5.1	22.9	100.0
2	#	810	1,335	93	543	2,781
	%	29.1	48.0	3.3	19.5	100.0
3	#	547	817	39	310	1,713
	%	31.9	47.7	2.3	18.1	100.0
4	#	1,629	2,067	213	1,024	4,933
	%	33.0	41.9	4.3	20.8	100.0
5	#	427	714	29	241	1,411
	%	30.3	50.6	2.1	17.1	100.0
6	#	385	727	87	310	1,509
	%	25.5	48.2	5.8	20.5	100.0
7	#	585	1,006	46	353	1,990
	%	29.4	50.6	2.3	17.7	100.0
8	#	228	505	32	139	904
	%	25.2	55.9	3.5	15.4	100.0
9	#	568	1,240	82	681	2,571
	%	22.1	48.2	3.2	26.5	100.0
10	#	1,012	1,640	166	581	3,399
	%	29.8	48.2	4.9	17.1	100.0
Statewide	#	7,025	12,235	1,002	5,141	25,403
	%	27.7	48.2	3.9	20.2	100.0

**Felony Juvenile Delinquency Petitions Filed in 2000  
Most Serious Alleged Offense**

Judicial District		Homicide	Criminal Sexual Conduct	Assault	Robbery	Burglary	Theft	Arson	Drugs	Weapons	Stolen Property	Property Damage	Other	Total
	#	%	#	%	#	%	#	%	#	%	#	%	#	%
1	#	2	61	158	8	180	322	23	104	47	25	56	48	1,034
	%	0.2	5.9	15.3	0.8	17.4	31.1	2.2	10.1	4.5	2.4	5.4	4.6	100.0
2	#	5	63	207	56	163	398	13	75	49	12	117	48	1,206
	%	0.4	5.2	17.2	4.6	13.5	33.0	1.1	6.2	4.1	1.0	9.7	4.0	100.0
3	#	1	40	95	9	151	201	10	30	22	21	44	33	657
	%	0.2	6.1	14.5	1.4	23.0	30.6	1.5	4.6	3.3	3.2	6.7	5.0	100.0
4	#	4	84	318	112	262	648	8	193	95	54	120	114	2,012
	%	0.2	4.2	15.8	5.6	13.0	32.2	0.4	9.6	4.7	2.7	6.0	5.7	100.0
5	#	0	42	94	1	134	182	2	19	18	15	74	26	607
	%	0	6.9	15.5	0.2	22.1	30.0	0.3	3.1	3.0	2.5	12.2	4.3	100.0
6	#	0	37	61	7	153	153	8	41	15	8	30	25	538
	%	0	6.9	11.3	1.3	28.4	28.4	1.5	7.6	2.8	1.5	5.6	4.6	100.0
7	#	1	62	108	15	214	248	6	33	31	20	93	44	875
	%	0.1	7.1	12.3	1.7	24.5	28.3	0.7	3.8	3.5	2.3	10.6	5.0	100.0
8	#	1	25	47	0	165	112	4	18	13	8	21	22	436
	%	0.2	5.7	10.8	0	37.8	25.7	0.9	4.1	3.0	1.8	4.8	5.0	100.0
9	#	2	48	108	8	256	251	18	41	40	16	59	37	884
	%	0.2	5.4	12.2	0.9	29.0	28.4	2.0	4.6	4.5	1.8	6.7	4.2	100.0
10	#	1	103	195	24	267	394	13	105	53	26	133	72	1,386
	%	0.1	7.4	14.1	1.7	19.3	28.4	0.9	7.6	3.8	1.9	9.6	5.2	100.0
Statewide	#	17	565	1,391	240	1,945	2,909	105	659	383	205	747	469	9,635
	%	0.2	5.9	14.4	2.5	20.2	30.2	1.1	6.8	4.0	2.1	7.8	4.9	100.0

**Juvenile Delinquency Petitions Disposed in CY 2000  
Petitions with a Finding/Admission of Guilt on At Least One Count  
Dispositional Outcomes/Sanctions By Judicial District**

Judicial District	DOC Commitment/Jail	DOC Commitment/Jail – Stayed	Short-Term Custody	Supervision	Evaluation / Outpatient Treatment	In-Patient Treatment	Other Out of Home Placement	Financial Sanctions	Other Sanctions
1	115	32	33	2,019	528	74	7	1,535	1,671
2	386	50	198	1,352	602	17	48	967	332
3	68	13	13	770	253	28	63	1,009	646
4	350	180	133	936	886	256	22	2,312	1,000
5	69	93	15	628	140	57	87	769	256
6	217	33	17	1,003	162	31	47	872	439
7	139	54	37	861	270	40	41	1,012	430
8	59	29	13	351	70	9	17	324	278
9	158	89	34	713	222	54	37	856	485
10	446	85	63	1,812	695	40	188	1,495	839

**The outcome categories for cases disposed in calendar year 2000 differ slightly from categories used in earlier legislative reports; in addition, the above figures only represent cases for which there was a finding or admission of guilt for the case as a whole or for at least one individual count.**

**The categories above include the following types of outcomes:**

*DOC Commitment/Jail:* Commitment to a Department of Corrections (DOC) or local facility.  
*DOC Commitment/Jail – Stayed:* Commitments to DOC and local facilities that are stayed.  
*Short-Term Custody:* Jails, lock-ups, and secure detention facilities not included as commitments.  
*Supervision:* Probation, home detention, electronic monitoring, appointment of Guardian ad Litem.  
*Evaluation/Outpatient Treatment and Inpatient Treatment:* Psychiatric, chemical dependency, sex offender or medical. Evaluations are included in the outpatient treatment category.  
*Other Out of Home Placement:* Out of home placements other than jail/DOC commitments.  
*Financial Sanctions:* Fines, restitution, court funds.  
*Other Sanctions:* School attendance, drug testing, driver's license suspension, no new arrests, no contact orders, letters of apology to victim. Letters of apology account for approximately 1/3 of this category.