

Document Get Query Service

Consumer Documentation

Contents

1. Preface	3
2. Overview	3
3. General Usage	3
5. Messaging Overview	4
6. Message Exchanges	5
7. Specific Usage	5
8. Related Documentation	6
9. Request Messages.....	6
10. Data Mapping to ECF Messages.....	6
a) FilingListQueryMessage mapping	7
b) FilingListResponseMessage mapping.....	9
c) DocumentQueryMessage mapping	10
d) DocumentResponseMessage mapping.....	12
11. Sample Messages.....	15
a) FilingListQueryMessage	15
b) FilingListResponseMessage.....	16
c) DocumentQueryMessage	18
d) DocumentResponseMessage.....	19
12. Document Revision History.....	22

1. Preface

This document describes the Integration Services Document Get service. It provides information on the purpose of the service and details regarding the request/response messages.

2. Overview

Document Get provides an option for court partners to access/download MNCIS case documents on an as-needed basis. This method allows for an automated system-to-system process using XML messaging.

It is a two-step process where partners first search for documents by court file number, with an optional date range, and then request the document they wish to receive.

Documents are provided as PDF files and in most instances are searchable. When multiple versions of a document exist, the service always provides the most recent version.

Messages for these exchanges use the Electronic Court Filing (ECF) 4.0 format.

3. General Usage

Use of the Document Get service requires partners to have rights to the service itself, as well as access to MNCIS cases and to MNCIS documents. Partner access to documents is determined by a combination of case type, case security, jurisdiction, and document security. Access is governed by Policy 800: Access to Records of the Judicial Branch.

The service is designed to support providing documents when user action within the consuming system dictates the need for a specific document or to check for recently-filed documents. It was not designed for, and cannot support, high volume requests (such as continually checking for documents on all cases stored within a consuming system or repeatedly downloading all documents on cases).

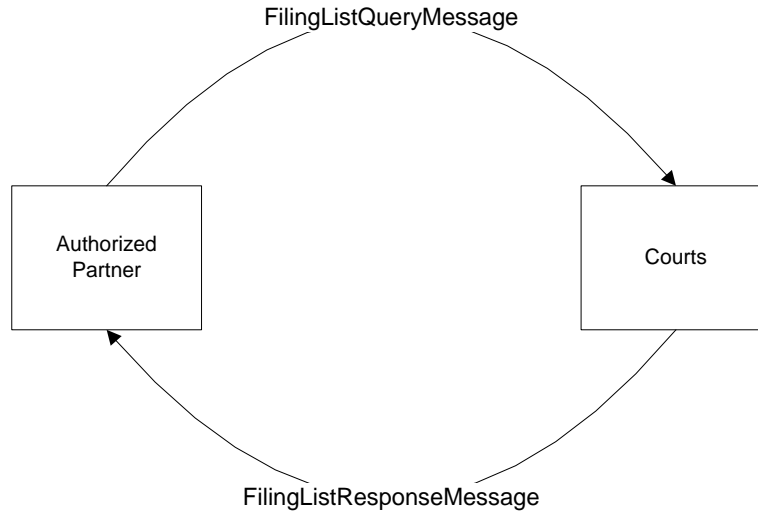
In order to preserve the performance of this service, the following best practices are recommended:

1. Perform non-user initiated requests outside of normal business hours.
2. If multiple non-user initiated requests need to be made at once, they should be submitted one at a time (instead of in parallel).
3. Avoid high-volume downloading of documents (i.e., all documents on all cases).
 - a. Use the information provided in the `FilingListResponseMessage` to limit the `DocumentQueryMessages`.
 - i. For example, the `DocumentDescriptionText` should be used to identify the documents in which a partner is interested.
4. Do not make multiple requests for the same document unless there is a newer version (i.e., the `DocumentFileControlID` has changed).
5. The initial version of the service only returns `MatchingFiling` records with a `FilingStatusCode` of `Accepted`. Future versions may include records with other status codes. `DocumentQueryMessages` should only be submitted for documents with a `FilingStatusCode` of `Accepted`.

Failure to follow the recommended best practices may result in a restriction of service access.

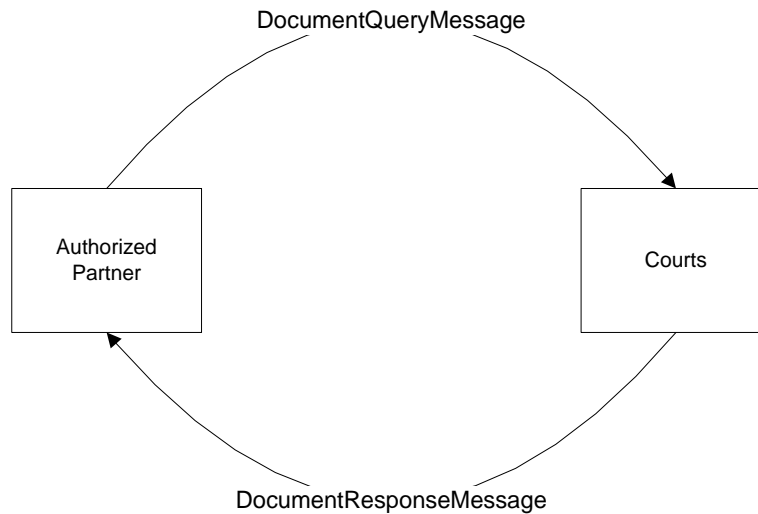
6. Messaging Overview

Step 1



At the point a partner system needs documents from a MNCIS case, it sends a request message to the Document Get service. The Document Get response returns a list of documents available to the consumer.

Step 2



The partner determines which document(s) they wish to receive and submits a request for the specific document. The Document Get response returns the requested document.

7. Message Exchanges

FilingListQueryMessage

Initial request message sent to the Courts. It initiates the Document Get process. This is a query to get a list of documents by case with an optional time-period restriction.

FilingListResponseMessage

Response to the **FilingListQueryMessage** request. It provides a list of documents that match the criteria in the request message and to which the partner has access.

DocumentQueryMessage

Request for a specific document listed in the **FilingListResponseMessage**.

DocumentResponseMessage

Contains the electronic document requested in the **DocumentQueryMessage**.

8. Specific Usage

FilingListQueryMessage - This message provides flexibility in requesting the list of available documents.

Elements that may be used in the request include: CaseCourt, CaseTrackingID, and DateRange:

- CaseCourt – Ignored, at this time.
- CaseTrackingID – Allows searching for documents filed on a specific case.
- Date Range – Allows searching for documents filed during a specific time period.

The following rules apply based on the elements included in the FilingListQueryMessage.

CaseCourt:

1. Required element.
2. An empty element is acceptable.
 - a. The CaseCourt element is currently ignored.

CaseTrackingID:

1. Required element.

Date Range [Start/End]

1. Optional element.
2. When a Date Range uses date elements, it is assumed that the Start Date begins at midnight (i.e., 00:00:00) and the End Date lasts through 11:59pm (i.e., 23:59:59).
3. When a Date Range has no End, the current date and time will be used.

QuerySubmitter

1. Required element.
2. Due to Judicial Branch audit requirements, either the **EntityOrganization** or the **EntityPerson** must be submitted.
 - a. Query requests initiated by an automated process within the system should include the EntityOrganization.
 - b. Query requests initiated by individual system users (e.g., ad hoc requests) should include the EntityPerson.

DocumentResponseMessage

QuerySubmitter

1. Required element.
2. Due to Judicial Branch audit requirements, either the EntityOrganization or the EntityPerson must be submitted.
 - a. Query requests initiated by an automated process within the system should include the EntityOrganization.
 - b. Query requests initiated by individual system users (i.e., ad hoc requests) should include the EntityPerson.

9. Related Documentation

Oasis web site:

<https://www.oasis-open.org/>

Oasis ECF Specification:

<http://docs.oasis-open.org/legalxml-courtfilingspecs/ecf/v4.01/ecf-v4.01-spec/errata01/os/ecf-v4.01-spec-errata01-os-complete.doc>

10. Request Messages

Soap Action	Method	Root Element
http://www.courts.state.mn.us/IS/02/ECFGetFilingList	GetFilingList	FilingListQueryMessage
http://www.courts.state.mn.us/IS/02/ECFGetDocument	GetDocument	DocumentQueryMessage

11. Data Mapping to ECF Messages

Notes:

- Only subsets of elements from the ECF message schemas are used for requesting documents from the Courts. The elements, with the corresponding ECF schema identifier, are represented below.
- Information regarding values are noted.
- Bolded elements in the ECF Element column contain values.
- Shaded rows represent 'container' elements used to provide structure and context. Container elements will group other elements and do not contain values themselves.

a) FilingListQueryMessage mapping

Line Ref Nbr	ECF/NIEM Element	Description	Include in Message?	Notes
1	FilingListQueryMessage	Root element	Always	Partner request for a list of documents on a case.
	ecf:SendingMDELocationID	Location to which messages can be sent.	Always	
	nc:IdentificationID	Callback URL of the sending service.	Always	Partner's URL
	ecf:SendingMDEProfileCode	ECF service interaction profile.	Always	Set to: urn:oasis:names:tc:legalxml- courtfilling:schema:xsd:WebServicesMessaging- 2.0
	ecf:QuerySubmitter	Entity submitting the query.	Always	
	ecf:EntityOrganization	Organization submitting query.	Optional -Required if EntityPerson is not included.	Use when request is system generated.
	nc:OrganizationIdentification		Always	
	nc:IdentificationID	Originating Agency Identification Number	Always	Originating Agency's ORI
	IdentificationCategoryText		Always	Set to: Originating Agency Identification Number
	nc:OrganizationName	Organization Name	Always	Originating agency's full name.
	ecf:EntityPerson		Optional -Required if EntityOrganization is not included.	Use when request is generated by an individual system user.
	nc:PersonName	Person submitting query.	Always	
	nc:PersonGivenName	First name		
	nc:PersonMiddleName	Middle name		
	nc:PersonSurName	Last name		
	nc:PersonOtherIdentification	Originating-system identification of person requesting query.	Always	
	nc:IdentificationID		Always	Individual user identification.
	IdentificationCategoryText		Always	Set to: Requesting System User Identification

Document Get Query Service Documentation

	nc:PersonOtherIdentification	Organization of person requesting query.	Always	
	nc:IdentificationID		Always	Originating Agency's ORI
	nc:IdentificationCategoryText		Always	Set to: Originating Agency Identification Number
	j:CaseCourt	Court with jurisdiction of the case.	Always	Required element of ECF schema. An empty element satisfies the schema.
	nc:OrganizationIdentification		Optional	
	nc:IdentificationID	Originating Agency Identification Number	Always	ORI for the court location for requested document search.
	nc:IdentificationCategoryText		Always	Set to: Originating Agency Identification Number
	nc:CaseTrackingID	Case identifier.	Always	Court file number on which documents are wanted.
	nc:DateRange		Optional	Range of document filing dates.
	nc:StartDate		Optional	First date in the range.
	nc:DateTime		Optional	
	nc:EndDate		Optional	Last date in the range.
	nc:DateTime		Optional	

b) FilingListResponseMessage mapping

Line Ref Nbr	ECF/NIEM Element	Description	Include in Message?	Notes
1	FilingListResponseMessage	Root element	Always	Court response to a FilingListQueryMessage.
	SendingMDELocationID	Location to which messages can be sent.	Always	
	nc:IdentificationID	Callback URL of sending service	Always	Court URL: https://is.courts.state.mn.us/PROD/WebServices/ElectronicCourtFiling/FilingReviewService_4_0.svc
	SendingMDEProfileCode	ECF service interaction profile.	Always	Determined by how partner has chosen to receive messages. Messages sent to a web service: urn:oasis:names:tc:legalxml-courtfiling:schema:xsd:WebServicesMessaging-2.0 Messages sent to a MQ Series queue: urn:courts:state:mn:us:MQMessaging-1.0 Messages pulled using a web services client application: urn:courts:state:mn:us:WebServicesRequest-1.0
	j:CaseCourt	Court with jurisdiction of the case.	Always	Required element of ECF schema.
	nc:OrganizationIdentification		Always	
	nc:IdentificationID	Originating Agency Identification Number	Always	ORI for the court location for requested document search.
	j:CourtName		Always	Name of court associated with ORI.
	Error	Error encountered during processing.	Optional	
	ErrorCode	Unique code identifying error.	Always	Defined Reference Table 1
	ErrorText	Description of error	Always	Defined Reference Table 1

Document Get Query Service Documentation

MatchingFiling	Documents matching query criteria.	Optional	
nc:DocumentDescriptionText		Always	Description of case event to which document is attached.
nc:DocumentFileControlID	Identifier assigned to a document version.	Always	Document version ID
nc:DocumentFiledDate		Always	Date & time document was linked to the court case event.
DateTime		Always	
nc:DocumentIdentification		Always	
nc:IdentificationID		Always	Unique identifier for court case event to which the document is attached. Use in: DocumentQueryMessage/nc:CaseDocketID to request the document.
IdentificationCategoryText		Always	Is set to: Court Case Event ID
nc:CaseTrackingID	Case identifier.	Always	Court file number associated with the document.
ecf:FilingStatus		Always	
FilingStatusCode	Status of the document: Received; Accepted; Partially-accepted; Rejected.	Always	Is set to: Accepted

c) DocumentQueryMessage mapping

Line Ref Nbr	ECF/NIEM Element	Description	Include in Message?	Notes
1	DocumentQueryMessage	Root element	Always	Partner request for a specific document
	ecf:SendingMDELocationID	Location to which messages can be sent.	Always	
	nc:IdentificationID	Callback URL of the sending service.	Always	Partner's URL
	ecf:SendingMDEProfileCode	ECF service interaction profile.	Always	Set to:

Document Get Query Service Documentation

				urn:oasis:names:tc:legalxml- court filing:schema:xsd:WebServicesMessaging- 2.0
	eef:QuerySubmitter	Entity submitting the query.	Always	
	eef:EntityOrganization		Optional -Required if EntityPerson is not included.	Use when message is system generated.
	nc:OrganizationIdentification		Always	
	nc:IdentificationID	Originating Agency Identification Number	Always	Originating Agency's ORI
	nc:IdentificationCategoryText		Always	Set to: Originating Agency Identification Number
	nc:OrganizationName	Organization Name	Always	Originating Agency's full name
	eef:EntityPerson		Optional -Required if EntityOrganization is not included.	Use when message is generated by an individual system user.
	nc:PersonName	Person submitting query.	Always	
	nc:PersonGivenName			
	nc:PersonMiddleName			
	nc:PersonSurName			
	nc:PersonOtherIdentification	Originating system identification of person requesting query.	Always	
	nc:IdentificationID		Always	Individual user identification.
	nc:IdentificationCategoryText		Always	Set to: Requesting System User Identification
	nc:PersonOtherIdentification	Organization of person requesting query.	Always	
	nc:IdentificationID		Always	Originating Agency's ORI
	nc:IdentificationCategoryText		Always	Set to: Originating Agency Identification Number
	j:CaseCourt	Court with jurisdiction of the case.	Always	Required element of ECF schema. An empty element will satisfy the schema.
	nc:OrganizationIdentification		Optional	

Document Get Query Service Documentation

	nc:IdentificationID	Originating Agency Identification Number	Always	ORI for the court location for requested document search.
	IdentificationCategoryText		Always	Set to: Originating Agency Identification Number
	nc:CaseTrackingID	Case identifier.	Always	Court file number on which documents are wanted.
	nc:CaseDocketID	Identifies the document being requested.	Always	Represents the Court Case Event for the chosen document. Refer to FilingListResponseMessage: nc:DocumentIdentification /nc:IdentificationID where IdentificationCategoryText = Court Case Event ID

d) DocumentResponseMessage mapping

Line Ref Nbr	ECF/NIEM Element	Description	Include in Message?	Notes
1	DocumentResponseMessage	Root element	Always	Court response to a DocumentQueryMessage
	SendingMDELocationID	Location to which messages can be sent.	Always	
	nc:IdentificationID	Callback URL of sending service	Always	Court URL: https://is.courts.state.mn.us/PROD/WebServices/ElectronicCourtFiling/CourtRecordService_4_0.svc
	SendingMDEProfileCode	ECF service interaction profile.	Always	Determined by how partner has chosen to receive messages. Messages sent to a web service: urn:oasis:names:tc:legalxml-courtfiling:schema:xsd:WebServicesMessaging-2.0 Messages sent to a MQ Series queue: urn:courts:state:mn:us:MQMessaging-1.0

Document Get Query Service Documentation

Line Ref Nbr	ECF/NIEM Element	Description	Include in Message?	Notes
				Messages pulled using a web services client application: urn:courts:state:mn:us:WebServicesRequest-1.0
	j:CaseCourt	Court with jurisdiction of the case.	Always	Required element of ECF schema.
	nc:OrganizationIdentification		Always	
	nc:IdentificationID	Originating Agency Identification Number	Always	ORI for the court location for requested document search.
	j:CourtName		Always	Name of court associated with ORI.
	Error			
	ErrorCode	Unique code identifying error.		Defined Reference Table 2
	ErrorText	Description of error		Defined Reference Table 2
	ecf:Document			
	nc:DocumentDescriptionText	Name of the document.	Optional	Name of the document. May be the same as: FilingListResponseMessage/MatchingFiling/DocumentDescriptionText May also be the same as: DocumentResponseMessage/Document/ DocumentMetadata/RegisterActionDescriptionText
	nc:DocumentFiledDate			
	DateTime			Date and time document is linked to the court case event.
	nc:DocumentIdentification			
	nc:IdentificationID	Unique identifier for the court case event to which the document is related.	Always	Represents the Court Case Event for the desired document. ID used to request the document.
	nc:IdentificationCategory			Court Case Event ID

Document Get Query Service Documentation

Line Ref Nbr	ECF/NIEM Element	Description	Include in Message?	Notes
	nc:DocumentSequenceID	This is the order for the document, zero based	Optional	Set to 0 for first document, increase by 1 for subsequent documents.
	ecf:DocumentMetadata	Information about the document	Always	
	j:RegisterActionDescriptionText	Description of the case event to which the document is attached.	Always	Will be the same as: FilingListResponseMessage/MatchingFiling/DocumentDescriptionText May also be the same as: DocumentResponseMessage/Document/DocumentDescriptionText
	ecf:FilingAttorneyID		Always	Required element in the ECF structure. An empty element is included.
	ecf:FilingPartyID		Always	Required element in the ECF structure. An empty element is included.
	ecf:SpecialHandlingInstructions			Indicates when document is confidential: Confidential Document. Not included for public documents.
	ecf:DocumentRendition	Version of the document	Always	
	nc:DocumentFileControlID	Identifier assigned to a document version.		Document version ID
	DocumentRenditionMetadata		Always	
	DocumentAttachment		Always	
	BinaryBase64Object	The binary base64 encoded document.	Always	
	BinaryFormatStandardName	File type format (file extension) of the document.	Always	application/pdf
	ecf:AttachmentSequenceID	Order for the attachment, zero based	Always	Set to 0, increase by 1 for each additional attachment.

12. Sample Messages

a) FilingListQueryMessage

```
<?xml version="1.0" encoding="UTF-8"?>
<n1:FilingListQueryMessage xmlns:nc="http://niem.gov/niem/niem-core/2.0" xmlns:ansi-nist="http://niem.gov/niem/ansi-nist/2.0"
xmlns:j="http://niem.gov/niem/domains/jxdm/4.0" xmlns:xsi="http://www.w3.org/2001/XMLSchema-instance"
xmlns:ecf="urn:oasis:names:tc:legalxml-courtfilingschema:xsd:CommonTypes-4.0" xmlns:n1="urn:oasis:names:tc:legalxml-
courtfilingschema:xsd:FilingListQueryMessage-4.0" xsi:schemaLocation="urn:oasis:names:tc:legalxml-
courtfilingschema:xsd:FilingListQueryMessage-4.0 ECF-4.0-FilingListQueryMessage.xsd">
  <ecf:SendingMDELocationID>
    <nc:IdentificationID>http://www.urlofcallingservice</nc:IdentificationID>
  </ecf:SendingMDELocationID>
  <ecf:SendingMDEProfileCode>urn:oasis:names:tc:legalxml-courtfilingschema:xsd:FilingListQueryMessage-
4.0</ecf:SendingMDEProfileCode>
  <ecf:QuerySubmitter>
    <ecf:EntityOrganization>
      <nc:OrganizationIdentification>
        <nc:IdentificationID>MN_ORI</nc:IdentificationID>
        <nc:IdentificationCategoryText>Originating Agency Identification Number</nc:IdentificationCategoryText>
      </nc:OrganizationIdentification>
      <nc:OrganizationName>MN_AgencyName</nc:OrganizationName>
    </ecf:EntityOrganization>
    <!--<ecf:EntityPerson>
      <nc:PersonName>
        <nc:PersonGivenName>Jane</nc:PersonGivenName>
        <nc:PersonMiddleName>Q</nc:PersonMiddleName>
        <nc:PersonSurName>Doe</nc:PersonSurName>
      </nc:PersonName>
      <nc:PersonOtherIdentification>
        <nc:IdentificationID>PartnerDomain\DoeJ</nc:IdentificationID>
        <nc:IdentificationCategoryText>Requesting Syster User Identification</nc:IdentificationCategoryText>
      </nc:PersonOtherIdentification>
      <nc:PersonOtherIdentification>
        <nc:IdentificationID>MN_ORI</nc:IdentificationID>
        <nc:IdentificationCategoryText>Originating Agency Identification Number</nc:IdentificationCategoryText>
      </nc:PersonOtherIdentification>
    </ecf:EntityPerson-->
  </ecf:QuerySubmitter>
  <j:CaseCourt>
  <nc:OrganizationIdentification>
```

```

        <nc:IdentificationID>MN070015J</nc:IdentificationID>
        <nc:IdentificationCategoryText>Originating Agency Identification Number</nc:IdentificationCategoryText>
    </nc:OrganizationIdentification>
</j:CaseCourt>
    <nc:CaseTrackingID>70-CR-17-51</nc:CaseTrackingID>
    <nc:DateRange>
        <nc:StartDate>
            <nc:DateTime>2017-03-20T00:00:00</nc:DateTime>
        </nc:StartDate>
        <nc:EndDate>
            <nc:DateTime>2017-03-23T23:59:59</nc:DateTime>
        </nc:EndDate>
    </nc:DateRange>
</n1:FilingListQueryMessage>

```

b) FilingListResponseMessage

```

<n1:FilingListResponseMessage xmlns="http://niem.gov/niem/niem-core/2.0" xmlns:ansi-nist="http://niem.gov/niem/ansi-nist/2.0"
xmlns:j="http://niem.gov/niem/domains/jxdm/4.0" xmlns:xsi="http://www.w3.org/2001/XMLSchema-instance" xmlns:ecf="urn:oasis:names:tc:legalxml-
courtfiling:schema:xsd:CommonTypes-4.0" xmlns:n1="urn:oasis:names:tc:legalxml-courtfiling:schema:xsd:FilingListResponseMessage-4.0"
xsi:schemaLocation="urn:oasis:names:tc:legalxml-courtfiling:schema:xsd:FilingListResponseMessage-4.0 ECF-4.0-FilingListResponseMessage.xsd">
    <ecf:SendingMDELocationID>
        <IdentificationID>https://is.courts.state.mn.us/PROD/WebServices/ElectronicCourtFiling/FilingReviewService\_4\_0.svc</IdentificationID>
    </ecf:SendingMDELocationID>
    <ecf:SendingMDEProfileCode>urn:oasis:names:tc:legalxml-courtfiling:schema:xsd:FilingListResponseMessage-4.0</ecf:SendingMDEProfileCode>
    <j:CaseCourt>
        <OrganizationIdentification>
            <IdentificationID>MN070015J</IdentificationID>
        </OrganizationIdentification>
        <j:CourtName>Scott County</j:CourtName>
    </j:CaseCourt>
    <ecf:Error>
        <ecf:ErrorCode>0</ecf:ErrorCode>
        <ecf:ErrorText>No error</ecf:ErrorText>
    </ecf:Error>
    <n1:MatchingFiling>
        <DocumentDescriptionText>Warrant Issued</DocumentDescriptionText>
        <DocumentFileControlID>46110184</DocumentFileControlID>
        <DocumentFiledDate>

```




```
<DateTime>2017-03-23T07:45:10</DateTime>
</DocumentFiledDate>
<DocumentIdentification>
  <IdentificationID>1810423778</IdentificationID>
  <IdentificationCategoryText>Court Case Event ID</IdentificationCategoryText>
</DocumentIdentification>
<CaseTrackingID>70-CR-17-51</CaseTrackingID>
<ecf:FilingStatus>
  <ecf:FilingStatusCode>Accepted</ecf:FilingStatusCode>
</ecf:FilingStatus>
</n1:MatchingFiling>
<n1:MatchingFiling>
  <DocumentDescriptionText>Probation Violation Warrant</DocumentDescriptionText>
  <DocumentFileControlID>46110185</DocumentFileControlID>
  <DocumentFiledDate>
    <DateTime>2017-03-23T07:45:36</DateTime>
  </DocumentFiledDate>
  <DocumentIdentification>
    <IdentificationID>1810423779</IdentificationID>
    <IdentificationCategoryText>Court Case Event ID</IdentificationCategoryText>
  </DocumentIdentification>
  <CaseTrackingID>70-CR-17-51</CaseTrackingID>
  <ecf:FilingStatus>
    <ecf:FilingStatusCode>Accepted</ecf:FilingStatusCode>
  </ecf:FilingStatus>
</n1:MatchingFiling>
<n1:MatchingFiling>
  <DocumentDescriptionText>Motion for Discovery</DocumentDescriptionText>
  <DocumentFileControlID>46110187</DocumentFileControlID>
  <DocumentFiledDate>
    <DateTime>2017-03-23T07:46:47</DateTime>
  </DocumentFiledDate>
  <DocumentIdentification>
    <IdentificationID>1810423781</IdentificationID>
    <IdentificationCategoryText>Court Case Event ID</IdentificationCategoryText>
  </DocumentIdentification>
  <CaseTrackingID>70-CR-17-51</CaseTrackingID>
  <ecf:FilingStatus>
    <ecf:FilingStatusCode>Accepted</ecf:FilingStatusCode>
  </ecf:FilingStatus>
</n1:MatchingFiling>
<n1:MatchingFiling>
  <DocumentDescriptionText>Motion</DocumentDescriptionText>
  <DocumentFileControlID>46110189</DocumentFileControlID>
  <DocumentFiledDate>
    <DateTime>2017-03-23T09:02:44</DateTime>
```

```

</DocumentFiledDate>
<DocumentIdentification>
  <IdentificationID>1810423782</IdentificationID>
  <IdentificationCategoryText>Court Case Event ID</IdentificationCategoryText>
</DocumentIdentification>
<CaseTrackingID>70-CR-17-51</CaseTrackingID>
<ecf:FilingStatus>
  <ecf:FilingStatusCode>Accepted</ecf:FilingStatusCode>
</ecf:FilingStatus>
</n1:MatchingFiling>
</n1:FilingListResponseMessage>

```

c) DocumentQueryMessage

```

<?xml version="1.0" encoding="UTF-8"?>
<n1:DocumentQueryMessage xmlns:nc="http://niem.gov/niem/niem-core/2.0" xmlns:ansi-nist="http://niem.gov/niem/ansi-nist/2.0"
xmlns:j="http://niem.gov/niem/domains/jxdm/4.0" xmlns:xsi="http://www.w3.org/2001/XMLSchema-instance"
xmlns:ecf="urn:oasis:names:tc:legalxml-courtfiling:schema:xsd:CommonTypes-4.0" xmlns:n1="urn:oasis:names:tc:legalxml-
courtfiling:schema:xsd:DocumentQueryMessage-4.0" xsi:schemaLocation="urn:oasis:names:tc:legalxml-
courtfiling:schema:xsd:DocumentQueryMessage-4.0 ECF-4.0-DocumentQueryMessage.xsd">
  <ecf:SendingMDELocationID>
    <nc:IdentificationID>http://www.urlofcallingservice</nc:IdentificationID>
  </ecf:SendingMDELocationID>
  <ecf:SendingMDEProfileCode>urn:oasis:names:tc:legalxml-courtfiling:schema:xsd:FilingListQueryMessage-
4.0</ecf:SendingMDEProfileCode>
  <ecf:QuerySubmitter>
    <ecf:EntityOrganization>
      <nc:OrganizationIdentification>
        <nc:IdentificationID>MN_ORI</nc:IdentificationID>
        <nc:IdentificationCategoryText>Originating Agency Identification Number</nc:IdentificationCategoryText>
      </nc:OrganizationIdentification>
      <nc:OrganizationName>MN_AgencyName</nc:OrganizationName>
    </ecf:EntityOrganization>
    <!--<ecf:EntityPerson>
      <nc:PersonName>
        <nc:PersonGivenName>Jane</nc:PersonGivenName>
        <nc:PersonMiddleName>Q</nc:PersonMiddleName>
        <nc:PersonSurName>Doe</nc:PersonSurName>
      </nc:PersonName>
      <nc:PersonOtherIdentification>
        <nc:IdentificationID>PartnerDomain\DoeJ</nc:IdentificationID>
        <nc:IdentificationCategoryText>Requesting Syster User Identification</nc:IdentificationCategoryText>
    </ecf:EntityPerson>
  </ecf:QuerySubmitter>
</n1:DocumentQueryMessage>

```

```

        </nc:PersonOtherIdentification>
        <nc:PersonOtherIdentification>
            <nc:IdentificationID>MN_ORI</nc:IdentificationID>
            <nc:IdentificationCategoryText>Originating Agency Identification Number</nc:IdentificationCategoryText>
        </nc:PersonOtherIdentification>
    </ecf:EntityPerson>-->
</ecf:QuerySubmitter>
<j:CaseCourt>
    <nc:OrganizationIdentification>
        <nc:IdentificationID> MN070015J </nc:IdentificationID>
        <nc:IdentificationCategoryText>Originating Agency Identification Number</nc:IdentificationCategoryText>
    </nc:OrganizationIdentification>
</j:CaseCourt>
    <nc:CaseTrackingID>70-CR-17-51</nc:CaseTrackingID>
    <nc:CaseDocketID>1810423782</nc:CaseDocketID>
</n1:DocumentQueryMessage>

```

d) DocumentResponseMessage

```

<n1:DocumentResponseMessage xmlns="http://niem.gov/niem/niem-core/2.0" xmlns:ansi-nist="http://niem.gov/niem/ansi-nist/2.0" xmlns:j="http://niem.gov/niem/domains/jxdm/4.0"
xmlns:xsi="http://www.w3.org/2001/XMLSchema-instance" xmlns:ecf="urn:oasis:names:tc:legalxml-courtfiling:schema:xsd:CommonTypes-4.0" xmlns:n1="urn:oasis:names:tc:legalxml-
courtfiling:schema:xsd:DocumentResponseMessage-4.0" xsi:schemaLocation="urn:oasis:names:tc:legalxml-courtfiling:schema:xsd:DocumentResponseMessage-4.0 ECF-4.0-
DocumentResponseMessage.xsd">
    <ecf:SendingMDELocationID>
        <IdentificationID>https://is.courts.state.mn.us/PROD/WebServices/ElectronicCourtFiling/FilingReviewService\_4\_0.svc</IdentificationID>
    </ecf:SendingMDELocationID>
    <ecf:SendingMDEProfileCode>urn:oasis:names:tc:legalxml-courtfiling:schema:xsd:WebServicesMessaging-2.0</ecf:SendingMDEProfileCode>
    <j:CaseCourt>
        <OrganizationIdentification>
            <IdentificationID> MN070015J </IdentificationID>
            <IdentificationCategoryText>Originating Agency Identification Number</IdentificationCategoryText>
        </OrganizationIdentification>
    </j:CaseCourt>
    <ecf:Error>
        <ecf:ErrorCode>0</ecf:ErrorCode>
        <ecf:ErrorText>No error</ecf:ErrorText>
    </ecf:Error>
    <ecf:Document>
        <DocumentDescriptionText>Motion</DocumentDescriptionText>
        <DocumentFiledDate>
            <DateTime>2017-03-23T09:02:44</DateTime>
        </DocumentFiledDate>
        <DocumentIdentification>

```



```
<IdentificationID>1810423782</IdentificationID>
<IdentificationCategoryText>Court Case Event ID</IdentificationCategoryText>
</DocumentIdentification>
<DocumentSequenceID>0</DocumentSequenceID>
<ecf:DocumentMetadata>
  <j:RegisterActionDescriptionText>Motion</j:RegisterActionDescriptionText>
  <ecf:FilingAttorneyID/>
  <ecf:FilingPartyID/>
  <ecf:SpecialHandlingInstructions>Confidential Document</ecf:SpecialHandlingInstructions>
</ecf:DocumentMetadata>
<ecf:DocumentRendition>
  <DocumentFileControlID>46110189</DocumentFileControlID>
  <ecf:DocumentRenditionMetadata>
    <ecf:DocumentAttachment>
      <BinaryBase64Object>UjBsR09EbGhjZ0dTQUxNQUFBUUNBRU1tQ1p0dU1GUxhEUzhi</BinaryBase64Object>
      <BinaryFormatStandardName>application/pdf</BinaryFormatStandardName>
      <ecf:AttachmentSequenceID>0</ecf:AttachmentSequenceID>
    </ecf:DocumentAttachment>
  </ecf:DocumentRenditionMetadata>
</ecf:DocumentRendition>
</ecf:Document>
</n1:DocumentResponseMessage>
```

Reference Table 1

FilingListResponseMessage errors

ErrorCode	ErrorText	Additional Notes
0	No error	
1	Unauthorized access	Partner does not have access to case.
2	CaseTrackingID not found	Case number provided by submitter was not found in MNCIS.
3	Invalid MatchingFiling*	Court Case Event ID xxx has more than one associated document.

*ErrorCode 3 indicates a court business-process error with a specific court case event and the related documents, not with all filings within the FilingListResponseMessage.

If the submitter is interested in the document with the error Invalid MatchingFiling, the submitter should report the issue to the [local](#) court referencing the CaseTrackingID (AKA, the court file number) and the DocumentDescriptionText (AKA, the case event).

Reference Table 2

DocumentResponseMessage errors

ErrorCode	ErrorText	Additional Notes
0	No error	

Soap Errors

Maybe received in response to either the FilingListQueryMessage or the DocumentQueryMessage.

ErrorCode	ErrorText	Additional Notes
Unauthorized Access	Consumer does not have rights to service	
Invalid Message	The <invalid element> is invalid because <error>.	Schema validation errors.
Invalid Message	Document not found	Requested document is not available (i.e., document no longer qualifies as publishable; case docket id was empty, document not on case, case not found)
Invalid Message	Unauthorized access	Partner does not have access to document or case
Invalid Message	CaseDocketID not on case	Mismatch between CaseDocketID and CaseTrackingID
Invalid Message	Invalid CaseDocketID*	CaseDocketID xxx has more than one associated document.

*Invalid CaseDocketID indicates a court business-process error with a specific court case event. See note regarding **ErrorCode 3** in the FilingListResponseMessage errors for more information.

13. Document Revision History

Date	Author	Description
2017-04-07	L. Iverson	Initial draft
2017-05-12	L. Iverson	Final updates (after BPU, Legal, and other technical input).
2017-08-01	L. Iverson	Updated DocumentResponseMessage and SOAP errors. The only error in the DocumentResponseMessage will be 0 (No Error). All other errors will be returned as SOAP faults.
2017-08-08	L. Iverson	Added EntityPerson to query request messages. Updated sample messages for FilingListQueryMessage and DocumentQueryMessage. Added General Usage item 4. Requests should only be made for documents with a FilingStatusCode of Accepted.
2018-09-27	L. Iverson	Added soap action and method information.
2018-12-14	L. Iverson	Added another recommended best practice.