



Service Information Query

Consumer Documentation

Contents

1. Preface	3
2. Overview	3
3. Messaging Overview	3
4. Messages Exchanged	4
5. Specific Elements - Submitted	4
6. Specific Elements - Returned	4
7. eFS Credentials.....	5
8. Related Documentation	6
9. Data Mapping to ECF Messages.....	6
a) ServiceInformationQueryMessage mapping	7
b) ServiceInformationResponseMessage mapping.....	9
10. Sample Messages.....	12
a) ServiceInformationQueryMessage	12
b) ServiceInformationResponseMessage.....	12
Reference Table 1 - Errors.....	17
Document Revision History.....	17

1. Preface

This document provides technical consumer documentation for partners interested in using Integration Service’s “Service Information Query” service.

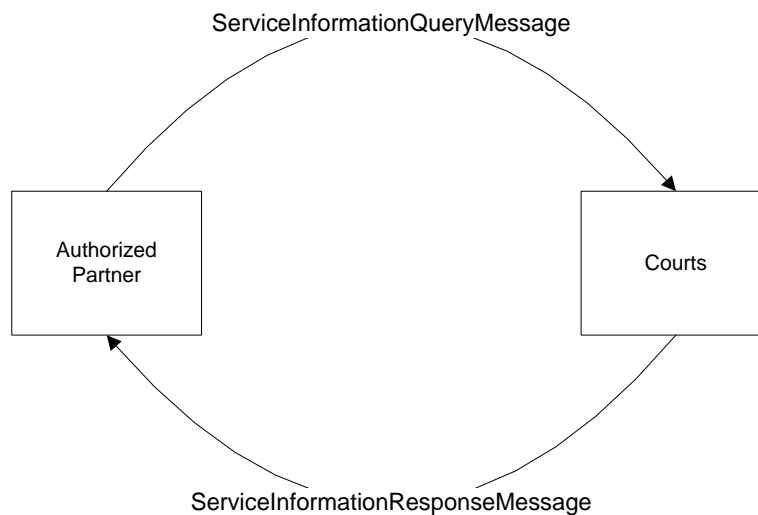
2. Overview

The Service Information Query allows an authorized external agency to submit a query to the courts to learn what parties and service contacts are associated with a case in eFS. For example, county attorney offices could use the Service Information Query in conjunction with the Attach Service Contact query to attach the appropriate attorney to the appropriate party on a case. As another example, a public defender office could use the Service Information Query in conjunction with the Subsequent Filing service to eServe documents to the appropriate parties/service contacts.

The Service Information Query is just one Court Integration service. Refer to the Court Integration Services website at <http://www.mncourts.gov/is> for a complete list of available services.

Messages for the Service Information Query use the Electronic Court Filing (ECF) 4.0 format.

3. Messaging Overview



At the point a partner system needs to know the parties and/or service contacts on a case in eFS, it sends a Service Information Query message to the Court Record Service.

Messages that make up the Service Information Query service use the SOAP message structure. See the [Integration Services Technical Overview](#) document for more information on the general format for Integration Service messages.

4. Messages Exchanged

ServiceInformationQueryMessage

Message sent to the courts to query the parties and service contacts on a specific case in eFS.

ServiceInformationResponseMessage

Response to the **ServiceInformationQueryMessage**. It will contain information about the parties and service contacts on the requested case, or will alternatively provide details as to what error prevented the requested information from being returned.

5. Specific Elements - Submitted

QuerySubmitter

1. Required element.
2. Either the **EntityOrganization** or the **EntityPerson** should be submitted.
 - a. Requests initiated by an automated process within the system should include the **EntityOrganization**.
 - b. Requests initiated by individual system users (e.g., ad hoc requests) should include the **EntityPerson**.

CaseTrackingID

1. Required element.
2. Must contain the court case number that the party and service contact information is being requested for.

6. Specific Elements - Returned

ServiceRecipient/EntityPerson

1. Contains information about a party on the case
2. Information included
 - a. Name
 - i. ../ecf:EntityPerson/nc:PersonName/..
 - b. Person Other Identification
 - i. ../ecf:EntityPerson/nc:PersonOtherIdentification/..
 - ii. The type of information being provided is defined by the **IdentificationCategoryText** element, with the identification value provided in the **IdentificationID** element.
 1. Court Record Case Party ID
 - a. An identifier specific to this party and case. Can be used with the Attach Service Contact service.
 2. Party Case Association Text
 - a. A description of the type of connection the party has to the case
 - b. Potential values are defined in enumeration values in the **ExtendedPartyConnectionType** simple type file
 3. Party Case Association Code
 - a. A code describing the type of connection the party has to the case
 - b. Potential values are defined in enumeration values in the **ExtendedPartyConnectionType** simple type file
 4. Party Base Case Association Text
 - a. A more general description of the type of connection the party has to the case

- b. Potential values are defined in associated values in the ExtendedPartyConnectionType simple type file
 - 5. Party Base Case Association Code
 - a. A code indicating a more general type of connection the party has to the case
 - b. Potential values are defined in associated values in the ExtendedPartyConnectionType simple type file
 - c. Attached service contacts
 - i. Explained in more detail below
 - ii. If a party has multiple service contacts attached, then multiple **ServiceRecipient/EntityPerson** elements will be returned for that party.

ServiceRecipient/EntityPerson/PersonAugmentation

1. Contains information about an eFS service contact associated with the party identified in the parent **EntityPerson** element.
2. Information included
 - a. Court Record Service Contact ID
 - i. ../../ecf:EntityPerson/ecf:PersonAugmentation/ecf:ElectronicServiceInformation/ecf:ServiceRecipient/nc:IdentificationID
 - b. Email
 - i. ../../ecf:EntityPerson/ecf:PersonAugmentation/nc:ContactInformation/nc:ContactEmailID
 - c. Name
 - i. ../../ecf:EntityPerson/ecf:PersonAugmentation/nc:ContactInformation/nc:ContactMailingAddress/nc:StructuredAddress/nc:AddressRecipientName
 - d. Address
 - i. ../../ecf:EntityPerson/ecf:PersonAugmentation/nc:ContactInformation/nc:ContactMailingAddress/nc:StructuredAddress/..
 - e. Phone
 - i. ../../ecf:EntityPerson/ecf:PersonAugmentation/nc:ContactInformation/nc:ContactTelephoneNumber/.
 - f. Firm Name
 - i. ../../ecf:EntityPerson/ecf:PersonAugmentation/nc:ContactInformation/nc:ContactEntityDescriptionText

7. eFS Credentials

Most Court Integration Services which query or update eFS need to have the credentials (ie username and password) for an eFS user in the appropriate eFS firm. The Service Information Query service is (currently) unique in that it does not require eFS credentials to be used. The is:FilingUser element within the SOAP header of the request message is still required, but the child is:Username and is:Password requirements do not need to be included.

The "is" namespace is "http://www.courts.state.mn.us/IS/02/"

eFS Username:

1. Does not need to be included (highlighted for emphasis)
2. ../../soap:Header/is:FilingUser/is:Username

eFS Password:

1. Does not need to be included (highlighted for emphasis)
2. Three options are available:
 - a. Plain text
 - i. ../soap:Header/is:FilingUser/is:Password
 - b. Encrypted
 - i. ../soap:Header/is:FilingUser/is:PasswordCipherText
 - ii. Messages between the courts and our partners are already encrypted, so the additional encryption is optional and primarily a courtesy to mask passwords from technical staff that may be viewing the messages for troubleshooting purposes.
 - iii. Both the courts and the integration partner would have the ability to decrypt the password
 - iv. Implemented using the Cryptographic Application Programming Interfaces (CAPI) implementation of the Advanced Encryption Standard (AES) algorithm
 - v. Please contact Court Integration Services for more details if you are interested in using this functionality.
 - c. Password Hash
 - i. ../soap:Header/is:FilingUser/is:PasswordHash
 - ii. Can be obtained through our User Authentication Service.
 - iii. Is unable to be decrypted by the courts or the integration partner.
 - iv. Will be considered valid for approximately a day, after which the User Authentication Service will need to be called again and a new Password Hash obtained.
 1. We recommend having your system acquire a fresh Password Hash for the user the first time they use an eFS Integration each day.

8. Related Documentation

Oasis web site:

<https://www.oasis-open.org/>

Oasis ECF Specification:

<http://docs.oasis-open.org/legalxml-court filing/specs/ecf/v4.01/ecf-v4.01-spec/errata01/os/ecf-v4.01-spec-errata01-os-complete.doc>

Court XML Schema and Simple Types:

<http://mncourts.gov/Integration-Service/CourtXML.aspx>

9. Data Mapping to ECF Messages

Notes:

- Only subsets of elements from the ECF/NIEM message schemas are used by the Service Information Query service. The elements used are represented below.
- Information regarding use is noted.
- Bolded elements in the ECF/NIEM Element column contain values.
- Shaded rows represent 'container' elements used to provide structure and context. Container elements will group other elements and do not contain values themselves.

Service Information Query Documentation

a) ServiceInformationQueryMessage mapping

Line Ref Nbr	Depth	ECF/NIEM Element	Description	Include in Message?	Notes
Q0	0	ServiceInformationQueryMessage	Root element	Always	Partner request for information about the parties and service contacts on a specific eFS case
Q1	1	ecf:SendingMDELocationID	Location to which messages can be sent	Always	
Q2	2	nc:IdentificationID	Callback URL of the sending service	Always	Partner's URL
Q3	1	ecf:SendingMDEProfileCode	ECF service interaction profile	Always	Set to: urn:oasis:names:tc:legalxml-courtfiling:schema:xsd:WebServicesMessaging-2.0
Q4	1	ecf:QuerySubmitter	Entity submitting the request	Always	
Q5	2	ecf:EntityOrganization	Organization submitting request	Optional -Required if EntityPerson is not included.	Use when message is system generated.
Q6	3	nc:OrganizationIdentification		Always	
Q7	4	nc:IdentificationID	Originating Agency Identification Number	Always	Originating Agency's ORI
Q8	4	nc:IdentificationCategoryText		Always	Set to: Originating Agency Identification Number
Q9	3	nc:OrganizationName	Organization Name	Always	Originating agency's full name.
Q10	2	ecf:EntityPerson		Optional -Required if EntityOrganization is not included.	Use when message is generated by an individual system user.
Q11	3	nc:PersonName	Person submitting request	Always	
Q12	4	nc:PersonGivenName	First name		
Q13	4	nc:PersonMiddleName	Middle name		

Service Information Query Documentation

Q14	4	nc:PersonSurName	Last name		
Q15	3	nc:PersonOtherIdentification	Originating-system identification of person requesting request	Always	
Q16	4	nc:IdentificationID		Always	Individual user identification.
Q17	4	nc:IdentificationCategoryText		Always	Set to: Requesting System User Identification
Q18	3	nc:PersonOtherIdentification	Organization of person requesting request	Always	
Q19	4	nc:IdentificationID		Always	Originating Agency's ORI
Q20	4	nc:IdentificationCategoryText		Always	Set to: Originating Agency Identification Number
Q21	1	j:CaseCourt		Always	This element will be ignored. Can submit an empty element
Q22	1	nc:CaseTrackingID	Case Identifier	Always	Court file number for which the party and service contact information should be returned.

b) ServiceInformationResponseMessage mapping

Line Ref Nbr	Depth	ECF/NIEM Element	Description	Include in Message?	Notes
R0	0	ServiceInformationResponseMessage	Root element	Always	Court response to a ServiceInformationQueryMessage
R1	1	ecf:SendingMDELocationID	Location to which messages can be sent.	Always	
R2	2	nc:IdentificationID	Callback URL of sending service	Always	Court URL: https://is.courts.state.mn.us/PROD/WebServices/ServiceCatalog/CourtRecordService_4_0.svc
R3	1	ecf:SendingMDEProfileCode	ECF service interaction profile.	Always	Determined by how partner has chosen to receive messages. Messages sent to a web service: urn:oasis:names:tc:legalxml-courtfiling:schema:xsd:WebServicesMessaging-2.0 Messages sent to a MQ Series queue: urn:courts:state:mn:us:MQMessaging-1.0 Messages pulled using a web services client application: urn:courts:state:mn:us:WebServicesRequest-1.0
R4	1	ecf:Error		Always	
R5	2	ecf:ErrorCode	Unique code identifying error.	Always	Defined in Reference Table 1 - Errors
R6	2	ecf:ErrorText	Description of error	Always	Defined in Reference Table 1 - Errors
R7	1	nc:CaseTrackingID	Case Identifier	Always	Court file number
R8	1	ecf:ServiceRecipient		Optional	A ServiceRecipient element will exist for each unique combination of party and service contact. Additionally, it is possible for parties to exist without an associated service contact, and also

Service Information Query Documentation

Line Ref Nbr	Depth	ECF/NIEM Element	Description	Include in Message?	Notes
					for service contacts to exist without an associated party (these are referred to as "Other Service Contacts").
R9	2	ecf:EntityPerson		Always	
R10	3	nc:PersonName		Optional	The name of the party on the case
R11	4	nc:PersonGivenName		Optional	
R12	4	nc:PersonMiddleName		Optional	
R13	4	nc:PersonSurName		Optional	
R14	4	nc:PersonNameSuffixText		Optional	
R15	3	nc:PersonOtherIdentification		Optional	
R16	4	nc:IdentificationID		Always	Information for the party on the case. Type of information is defined by the associated IdentificationCategoryText
R17	4	nc:IdentificationCategoryText		Always	Set to one of the following: <ul style="list-style-type: none"> • Court Record Case Party ID • Party Case Association Text • Party Case Association Code • Party Base Case Association Text • Party Base Case Association Code
R18	3	ecf:PersonAugmentation		Always	Information within the PersonAugmentation element belongs to the Service Contact
R19	4	ecf:ElectronicServiceInformation		Always	
R20	5	ecf:ServiceRecipientID		Always	
R21	6	nc:IdentificationID	Court Record Service Contact ID	Always	
R22	6	nc:IdentificationCategoryText		Always	Will be set to: Court Record Service Contact ID
R23	4	nc:ContactInformation		Always	
R24	5	nc:ContactEmailID	Service contact's email address	Always	
R25	5	nc:ContactMailingAddress		Always	
R26	6	nc:StructuredAddress		Always	

Service Information Query Documentation

Line Ref Nbr	Depth	ECF/NIEM Element	Description	Include in Message?	Notes
R27	7	nc:AddressRecipientName	Service contact's name	Always	Formatted: First Middle Last
R28	7	nc:LocationStreet		Optional	
R29	8	nc:StreetFullText		Always	
R30	7	nc:AddressSecondaryUnitText		Optional	
R31	7	nc:LocationCityName		Optional	
R32	7	nc:LocationStateName		Optional	
R33	7	nc:LocationPostalCode		Optional	
R34	6	nc:ContactTelephoneNumber		Optional	
R35	7	nc:FullTelephoneNumber		Always	
R36	8	nc:TelephoneNumberFullID		Always	
R37	6	nc:ContactEntityDescriptionText	Firm Name	Always	The name of the eFS Firm which the service contact belongs to

10. Sample Messages

a) ServiceInformationQueryMessage

```
<?xml version="1.0" encoding="UTF-8"?>
<ServiceInformationQueryMessage xmlns="urn:oasis:names:tc:legalxml-
court filing:schema:xsd:ServiceInformationQueryMessage-4.0" xmlns:j="http://niem.gov/niem/domains/jxdm/4.0"
xmlns:nc="http://niem.gov/niem/niem-core/2.0" xmlns:ecf="urn:oasis:names:tc:legalxml-
court filing:schema:xsd:CommonTypes-4.0" xmlns:xsi="http://www.w3.org/2001/XMLSchema-instance"
xsi:schemaLocation="urn:oasis:names:tc:legalxml-court filing:schema:xsd:ServiceInformationQueryMessage-4.0
file:///H:/Deve/Schemas/ECF-4.0/ecf-v4.0-spec/xsd/message/ECF-4.0-ServiceInformationQueryMessage.xsd">
  <ecf:SendingMDELocationID>
    <nc:IdentificationID>https://filingassemblymde.com</nc:IdentificationID>
  </ecf:SendingMDELocationID>
  <ecf:SendingMDEProfileCode>urn:oasis:names:tc:legalxml-court filing:schema:xsd:WebServicesMessaging-
2.0</ecf:SendingMDEProfileCode>
  <ecf:QuerySubmitter>
    <nc:EntityOrganization>
      <nc:OrganizationIdentification>
        <nc:IdentificationID>MN001013A</nc:IdentificationID>
        <nc:IdentificationCategoryText>Originating Agency Identification
Number</nc:IdentificationCategoryText>
      </nc:OrganizationIdentification>
      <nc:OrganizationName>Aitkin County Attorney</nc:OrganizationName>
    </nc:EntityOrganization>
  </ecf:QuerySubmitter>
  <j:CaseCourt/>
  <nc:CaseTrackingID>27-CV-17-5</nc:CaseTrackingID>
```

b) ServiceInformationResponseMessage

```
<?xml version="1.0" encoding="utf-8"?>
<ServiceInformationResponseMessage xmlns="urn:oasis:names:tc:legalxml-
court filing:schema:xsd:ServiceInformationResponseMessage-4.0" xmlns:j="http://niem.gov/niem/domains/jxdm/4.0"
xmlns:nc="http://niem.gov/niem/niem-core/2.0" xmlns:ecf="urn:oasis:names:tc:legalxml-
court filing:schema:xsd:CommonTypes-4.0" xmlns:xsi="http://www.w3.org/2001/XMLSchema-instance"
xsi:schemaLocation="urn:oasis:names:tc:legalxml-court filing:schema:xsd:ServiceInformationResponseMessage-4.0
file:///H:/Deve/Schemas/ECF-4.0/ecf-v4.0-spec/xsd/message/ECF-4.0-ServiceInformationResponseMessage.xsd">
  <ecf:SendingMDELocationID>
    <nc:IdentificationID>https://is.courts.state.mn.us/PROD/WebServices/ElectronicCourtFiling/CourtRecordService_4_
0.svc</nc:IdentificationID>
  </ecf:SendingMDELocationID>
```



```

    <ecf:SendingMDEProfileCode>urn:oasis:names:tc:legalxml-courtfiling:schema:xsd:WebServicesMessaging-
2.0</ecf:SendingMDEProfileCode>
    <j:CaseCourt>
      <nc:OrganizationIdentification>
        <nc:IdentificationID>MN027015J</nc:IdentificationID>
        <nc:IdentificationCategoryText>Originating Agency Identification
Number</nc:IdentificationCategoryText>
      </nc:OrganizationIdentification>
    </j:CaseCourt>
    <ecf:Error>
      <ecf:ErrorCode>0</ecf:ErrorCode>
      <ecf:ErrorText>No Error</ecf:ErrorText>
    </ecf:Error>
    <nc:CaseTrackingID>27-CV-17-302</nc:CaseTrackingID>
    <ServiceRecipient>
      <ecf:EntityPerson>
        <nc:PersonName>
          <nc:PersonGivenName>John</nc:PersonGivenName>
          <nc:PersonSurName>Smith</nc:PersonSurName>
        </nc:PersonName>
        <nc:PersonOtherIdentification>
          <nc:IdentificationID>7fad582f-cb42-42f6-98ec-a995e4e2880a</nc:IdentificationID>
          <nc:IdentificationCategoryText>Court Record Case Party ID</nc:IdentificationCategoryText>
        </nc:PersonOtherIdentification>
        <nc:PersonOtherIdentification>
          <nc:IdentificationID>Respondent</nc:IdentificationID>
          <nc:IdentificationCategoryText>Party Case Association Text</nc:IdentificationCategoryText>
        </nc:PersonOtherIdentification>
        <nc:PersonOtherIdentification>
          <nc:IdentificationID>RSP</nc:IdentificationID>
          <nc:IdentificationCategoryText>Party Case Association Code</nc:IdentificationCategoryText>
        </nc:PersonOtherIdentification>
        <nc:PersonOtherIdentification>
          <nc:IdentificationID>Defendant</nc:IdentificationID>
          <nc:IdentificationCategoryText>Party Base Case Association
Text</nc:IdentificationCategoryText>
        </nc:PersonOtherIdentification>
        <nc:PersonOtherIdentification>
          <nc:IdentificationID>DF</nc:IdentificationID>
          <nc:IdentificationCategoryText>Party Base Case Association
Text</nc:IdentificationCategoryText>

```



```

</nc:PersonOtherIdentification>
<ecf:PersonAugmentation>
  <ecf:ElectronicServiceInformation>
    <ecf:ServiceRecipientID>
      <nc:IdentificationID>894ddfff-b9bf-44cc-828f-
52bb2bb4ae9e</nc:IdentificationID>
      <nc:IdentificationCategoryText>Court Record Service Contact
ID</nc:IdentificationCategoryText>
    </ecf:ServiceRecipientID>
    <ecf:ReceivingMDELocationID/>
    <ecf:ReceivingMDEProfileCode/>
  </ecf:ElectronicServiceInformation>
  <nc:ContactInformation>
    <nc:ContactEmailID>Service.Contact.5@courts.state.mn.us</nc:ContactEmailID>
    <nc:ContactMailingAddress>
      <nc:StructuredAddress>
        <nc:AddressRecipientName>George ServiceContact
Jetson</nc:AddressRecipientName>
      </nc:StructuredAddress>
    </nc:ContactMailingAddress>
    <nc:ContactEntityDescriptionText>Two Clerks, a Lawyer, and a Pizza
Place</nc:ContactEntityDescriptionText>
  </nc:ContactInformation>
</ecf:PersonAugmentation>
</ecf:EntityPerson>
</ServiceRecipient>
<ServiceRecipient>
  <ecf:EntityPerson>
    <nc:PersonName>
      <nc:PersonGivenName>Billy</nc:PersonGivenName>
      <nc:PersonMiddleName>A</nc:PersonMiddleName>
      <nc:PersonSurName>Johnson</nc:PersonSurName>
      <nc:PersonNameSuffixText>JR</nc:PersonNameSuffixText>
    </nc:PersonName>
    <nc:PersonOtherIdentification>
      <nc:IdentificationID>7fad582f-cb42-42f6-98ec-a111e4e2833b</nc:IdentificationID>
      <nc:IdentificationCategoryText>Court Record Case Party ID</nc:IdentificationCategoryText>
    </nc:PersonOtherIdentification>
    <nc:PersonOtherIdentification>
      <nc:IdentificationID>Petitioner</nc:IdentificationID>
      <nc:IdentificationCategoryText>Party Case Association Text</nc:IdentificationCategoryText>

```



```

</nc:PersonOtherIdentification>
<nc:PersonOtherIdentification>
  <nc:IdentificationID>PET</nc:IdentificationID>
  <nc:IdentificationCategoryText>Party Case Association Code</nc:IdentificationCategoryText>
</nc:PersonOtherIdentification>
<nc:PersonOtherIdentification>
  <nc:IdentificationID>Plaintiff</nc:IdentificationID>
  <nc:IdentificationCategoryText>Party Base Case Association
Text</nc:IdentificationCategoryText>
  </nc:PersonOtherIdentification>
<nc:PersonOtherIdentification>
  <nc:IdentificationID>PL</nc:IdentificationID>
  <nc:IdentificationCategoryText>Party Base Case Association
Text</nc:IdentificationCategoryText>
  </nc:PersonOtherIdentification>
</ecf:EntityPerson>
</ServiceRecipient>
<ServiceRecipient>
  <ecf:EntityPerson>
    <ecf:PersonAugmentation>
      <ecf:ElectronicServiceInformation>
        <ecf:ServiceRecipientID>
          <nc:IdentificationID>db4b6f0e-5bc5-4f8a-a08e-
0225541927d3</nc:IdentificationID>
          <nc:IdentificationCategoryText>Court Record Service Contact
ID</nc:IdentificationCategoryText>
        </ecf:ServiceRecipientID>
        <ecf:ReceivingMDELocationID/>
        <ecf:ReceivingMDEProfileCode/>
      </ecf:ElectronicServiceInformation>
      <nc:ContactInformation>
        <nc:ContactEmailID>Service.Email@gmail.com</nc:ContactEmailID>
        <nc:ContactMailingAddress>
          <nc:StructuredAddress>
            <nc:AddressRecipientName>Nick Lawyer McDonald</nc:AddressRecipientName>
            <nc:LocationStreet>
              <nc:StreetFullText>123 Sesame St</nc:StreetFullText>
            </nc:LocationStreet>
            <nc:AddressSecondaryUnitText>Apt B</nc:AddressSecondaryUnitText>
            <nc:LocationCityName>Saint Paul</nc:LocationCityName>
            <nc:LocationStateName>MN</nc:LocationStateName>

```



Service Information Query Documentation

```
<nc:LocationCountryFIPS10-4Code>US</nc:LocationCountryFIPS10-4Code>  
<nc:LocationPostalCode>55105</nc:LocationPostalCode>  
</nc:StructuredAddress>  
</nc:ContactMailingAddress>  
<nc:ContactTelephoneNumber>  
<nc:FullTelephoneNumber>  
<nc:TelephoneNumberFullID>800-867-5309</nc:TelephoneNumberFullID>  
</nc:FullTelephoneNumber>  
</nc:ContactTelephoneNumber>  
<nc:ContactEntityDescriptionText>Legal Lawyers</nc:ContactEntityDescriptionText>  
</nc:ContactInformation>  
</ecf:PersonAugmentation>  
</ecf:EntityPerson>  
</ServiceRecipient>  
</ServiceInformationResponseMessage>
```


Reference Table 1 - Errors

Errors

ErrorCode	ErrorText	Additional Notes
0	No Error	
13	Service currently unavailable	
34	Technical Error: ...	
40	Invalid Case Number.	The CaseTrackingID may not have been provided.
41	Error accessing case: ...	
64	Unmapped error from eFS: ...	
67	Ambiguous Case Number	

Soap Errors

ErrorCode	ErrorText	Additional Notes
Invalid Security Token	An invalid security token was provided	Refers to the Integration Services account, not the eFS account
Unauthorized Access	Consumer does not have rights to service	
Invalid Message	The <invalid element> is invalid because <error>.	Schema validation errors.
Version Mismatch	An invalid message version was provided	

Document Revision History

Date	Author	Description
2018-03-05	E. Sczygelski	Initial draft
2018-10-05	E. Sczygelski	Defined the "is" namespace is http://www.courts.state.mn.us/IS/02/ . Used for submitting eFS credentials.
2019-04-29	E. Sczygelski	Updating eFS Credential section to indicate that General Rules of Practice 14 requires that eFS accounts belong to persons
2019-10-24	E. Sczygelski	Renumbering errors to have numbers align between eFS Integration Services
2019-11-05	E. Sczygelski	Updated to indicate that eFS credentials are no longer required for this service.
2020-02-19	E. Sczygelski	Documentation published – service is now out of pilot and part of the general service catalog